



Western summer tours

1957



UNION PACIFIC RAILROAD



AUGUST 1957

| Sun | Mon | Tue | Wed | Thu | Fri | Sat |
|-----|-----|-----|-----|-----|-----|-----|
| | | | | 1 | 2 | 3 |
| 4 | 5 | 6 | 7 | 8 | 9 | 10 |
| 11 | 12 | 13 | 14 | 15 | 16 | 17 |
| 18 | 19 | 20 | 21 | 22 | 23 | 24 |
| 25 | 26 | 27 | 28 | 29 | 30 | 31 |

SEPTEMBER 1957

| Sun | Mon | Tue | Wed | Thu | Fri | Sat |
|-----|-----|-----|-----|-----|-----|-----|
| 1 | 2 | 3 | 4 | 5 | 6 | 7 |
| 8 | 9 | 10 | 11 | 12 | 13 | 14 |
| 15 | 16 | 17 | 18 | 19 | 20 | 21 |
| 22 | 23 | 24 | 25 | 26 | 27 | 28 |
| 29 | 30 | | | | | |

OCTOBER 1957

| Sun | Mon | Tue | Wed | Thu | Fri | Sat |
|-----|-----|-----|-----|-----|-----|-----|
| | | 1 | 2 | 3 | 4 | 5 |
| 6 | 7 | 8 | 9 | 10 | 11 | 12 |
| 13 | 14 | 15 | 16 | 17 | 18 | 19 |
| 20 | 21 | 22 | 23 | 24 | 25 | 26 |
| 27 | 28 | 29 | 30 | 31 | | |

TOURS

| | | | |
|--------|---------|--|-------|
| "YT" | 9 DAYS | GRAND TETON - YELLOWSTONE NATIONAL PARKS - JACKSON HOLE - SALT LAKE CITY - DENVER | 7-11 |
| "YRG" | 10 DAYS | GRAND TETON - YELLOWSTONE NATIONAL PARKS - SALT LAKE CITY - ROYAL GORGE - COLORADO SPRINGS - PIKES PEAK - DENVER | 12-17 |
| "Z" | 12 DAYS | ZION - BRYCE CANYON - GRAND CANYON NATIONAL PARKS - SALT LAKE CITY - DENVER | 19-25 |
| "YTZ" | 14 DAYS | GRAND TETON - YELLOWSTONE - GRAND CANYON - BRYCE CANYON - ZION NATIONAL PARKS - SALT LAKE CITY - DENVER | 26-32 |
| "ZLV" | 12 DAYS | LAS VEGAS - ZION - BRYCE CANYON - GRAND CANYON NATIONAL PARKS - SALT LAKE CITY - ROYAL GORGE - COLORADO SPRINGS - DENVER | 33-37 |
| "BC" | 14 DAYS | CALIFORNIA BARGAIN TOUR - YOSEMITE NATIONAL PARK - LOS ANGELES - SAN FRANCISCO | 39-45 |
| "Z-BC" | 21 DAYS | CALIFORNIA AND UTAH - ARIZONA WONDERLANDS ECONOMY TOUR | 46 |
| "C" | 14 DAYS | CALIFORNIA (DE LUXE) TOUR - YOSEMITE NATIONAL PARK - LOS ANGELES - SAN FRANCISCO - LAS VEGAS, NEV. - HOOVER DAM | 47-53 |
| "Z-C" | 21 DAYS | UTAH - ARIZONA WONDERLANDS AND CALIFORNIA DE LUXE TOUR | 54 |
| "PNW" | 14 DAYS | PACIFIC NORTHWEST - CANADIAN ROCKIES - MT. RAINIER NATIONAL PARK - PORTLAND - BREMER-TON - VICTORIA - LAKE LOUISE-BANFF | 55-62 |
| "RM" | 8 DAYS | ROCKY MOUNTAIN NATIONAL (ESTES) PARKS - GRAND LAKE - COLORADO SPRINGS - DENVER | 63-67 |

GENERAL

| | |
|---------------------------------------|-------|
| APPLICATION FOR RESERVATION | 71 |
| GENERAL INFORMATION | 68-70 |
| INTRODUCTION | 3-5 |
| TRAVEL OFFICES OUTSIDE BACK COVER, OR | 72 |

MAPS

| | |
|--|-------------------|
| CALIFORNIA | 38 |
| COLORADO | 66 |
| PACIFIC NORTHWEST - CANADIAN ROCKIES | 58 |
| TOUR MAP (UNION PACIFIC LINES) | INSIDE BACK COVER |
| UTAH-ARIZONA NATIONAL PARKS | 18 |
| YELLOWSTONE-GRAND TETON NATIONAL PARKS | 6 |



A Rare Treat AND A *Glorious Adventure ---* **A WESTERN VACATION TOUR**

While a summer vacation is "what you make it," there are certain conditions which, if present, often mean the difference between a so-so outing and a delightful, memorable period away from home.

One of the most important "conditions" is, of course, locale — those areas or regions that offer unparalleled scenic beauties and an opportunity to see and do things quite removed from the humdrum or ordinary.

The West, for example.

It offers you Colorado with its sky piercing peaks, mountain lakes and forests. And here are Zion, Bryce Canyon and Grand Canyon National Parks, the world famous Utah-Arizona Wonderlands. Here, too, is Yellowstone, nature's most fascinating Curiosity Shop, and the nearby Tetons, whose soaring peaks are Alpine in grandeur and sweep. And of course picturesque California with its Yosemite National Park extends an invitation to come, visit and have fun. Finally, there are the Pacific Northwest and Canadian Rockies, where scenic thrills are seemingly inexhaustible and every turn of the head brings new "Ohs" and "Ahs."

Vacation wonderlands, all of them . . . and so easy to visit. Simply join one of the Union Pacific All-Expense, Escorted Tours described in the following pages. Each of the nine different itineraries (123 departures during the season) includes a trip through at least one National Park and visits other regions and interesting cities as well.

All arrangements for hotel, resort, train reservations, sightseeing, etc., are made in advance. You know, too, the exact cost of your trip before you start — one moderate charge covers everything, including all meals while with the tour. An experienced escort accompanies each tour to look after all travel details en route including baggage. Your part in the program is simply this: *To relax and enjoy every precious moment of your vacation.*

Do you know of a more ideal vacation arrangement? Nor do we. And traveling with congenial companions will add to your pleasure.

So go vacationing in the West the tour way. It's a rare treat and a glorious adventure!

UNION PACIFIC *All-Expense Tours*

REACH THE ATTRACTIONS SHOWN BELOW —
SCENIC SPLENDORS THAT THRILL AND INSPIRE

Every tour includes at least one National Park.

YELLOWSTONE AND GRAND TETON NATIONAL PARKS. A complete tour of Yellowstone with its geysers, hot springs, famous canyon, Great Falls, terraces and other phenomena, also Grand Teton National Park and the storied Jackson Hole country are featured on tours "YT", "YTZ" and "YRG".

GRAND CANYON NATIONAL PARK. Vast, awe-inspiring, mysterious. Its soft, subtle colors change before your eyes as the sun moves across the sky — while a mile below the rim the Colorado River is still hard at work deepening the canyon. Seen on the "Z", "YTZ" and "ZLV" tours.

ZION NATIONAL PARK. Zion Canyon resembles a gigantic rock garden. Here and there the canyon widens into majestic courts and sunlit glades, surrounded by towering temples, among them the Great White Throne. Coloring ranges from deep red to white. Visited on the "Z", "YTZ" and "ZLV" tours.

BRYCE CANYON NATIONAL PARK. A vast bowl of scintillating red and orange colored rock formations. When the world was young these might well have been the jewels of the Gods — gigantic garnets, amethysts and rubies. How they sparkle in the sunlight! Included in "Z", "YTZ" and "ZLV" tours.

ROCKY MOUNTAIN NATIONAL PARK. Top o' the world mountainland. You see Estes Park, Grand Lake, Iceberg Lake and travel over Trail Ridge Road, Milner Pass and Berthoud Pass, crossing and recrossing the Continental Divide. Mountain splendor that is never forgotten. Visited on the "RM" tour.

DENVER. All tours except the "C", "BC" and "PNW" include sightseeing in Denver. Several also visit Denver's mountain parks and Central City.

COLORADO SPRINGS. The gateway to Pikes Peak and the Garden of the Gods, visited on tours "YRG", "ZLV" and "RM". The "RM" tour includes a trip to Will Rogers' Shrine of the Sun and summit of Cheyenne Mountain.

CALIFORNIA. You visit Riverside, Los Angeles, Hollywood, San Diego, San Francisco, Yosemite National Park, Disneyland, Knott's Berry Farm; even a bit of Old Mexico is added for good measure. The Tour-way is the ideal way to see them, either on a "C" Tour or a "BC" Tour.

LAS VEGAS, NEVADA AND HOOVER DAM. Visited on "C" and "ZLV" tours.

PACIFIC NORTHWEST AND CANADIAN ROCKIES. This Evergreen vacation empire is served by our "PNW" tour and includes the Columbia River Gorge, Bonneville Dam, Mt. Rainier National Park, Lake Louise and Banff in the Canadian Rockies as well as stopovers in Portland, Seattle and Victoria. Also a tour through the Puget Sound Naval Shipyard at Bremerton.

SALT LAKE CITY. Utah's beautiful capital. Here you view Saltair Beach on Great Salt Lake; enjoy the organ recital in the Mormon Tabernacle and see many sights of historic interest. Salt Lake City is a feature of all our tours with the exception of the "C", "BC", "PNW" and "RM".

Advantages of Tour Vacations

ALL-EXPENSE TOUR VACATIONS *are ideally suited for young and old alike.* Traveling with congenial companions adds a great deal to one's pleasure.

WOMEN TRAVELING ALONE are sometimes hesitant about taking an extended vacation trip. Escorted tours bridge this difficulty. Introduced to other members of the group they will feel "at home" among friends and have the trip of a lifetime.

TOUR TRAVELERS ARE RELIEVED OF DETAILS incident to travel. All reservations and other arrangements are made in advance for them.

EXPERIENCED ESCORTS ACCOMPANY EVERY TOUR to look after tickets, transfer of baggage, room registrations, sightseeing, etc. They are our representatives who see that advance arrangements made for reservations and programmed activities are properly carried out.

YOU'LL KNOW EXACTLY WHAT YOUR TRIP WILL COST before you start. One moderate charge covers everything including all meals while with the tour. Only such incidentals as tips to waiters or waitresses, Pullman porters, coach attendants or bus drivers and such purchases as you may want to make, are extra.

UNION PACIFIC TOURS ARE QUALITY TOURS. They provide the best accommodations available, include as many attractions as possible and yet maintain a proper balance between rest, recreation and relaxation — at a fair price.

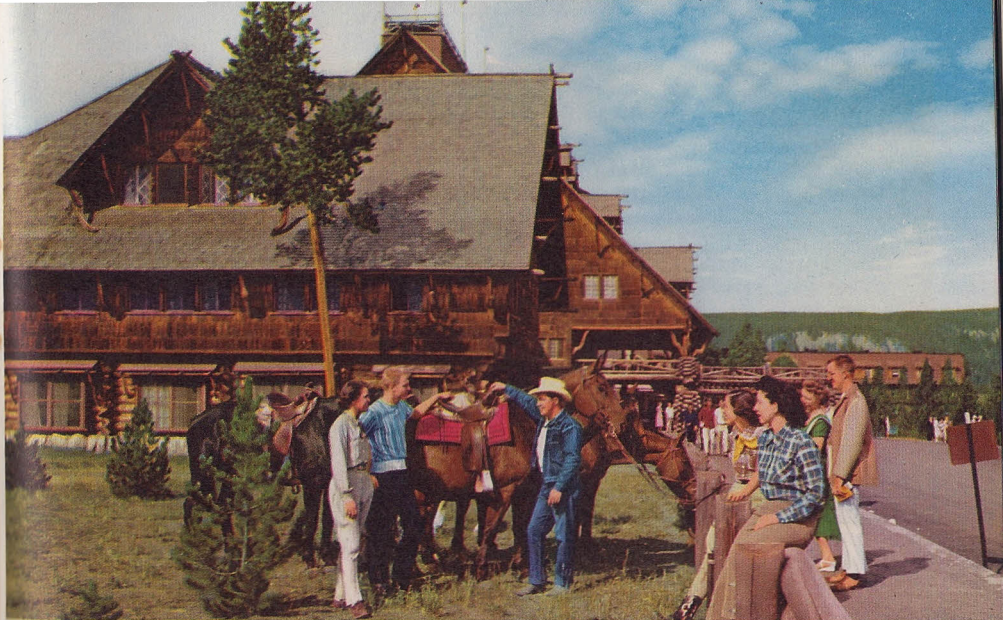
Comparison with any other is invited, particularly on such points as total cost, number of meals included, accommodations provided and service performed.

You travel under the sponsorship of an experienced, responsible organization. Union Pacific Tours have been operated successfully since 1900.

"UNION PACIFIC TOURS SATISFY" is more than just a slogan. Evidence is the volume of commendatory letters and favorable comments received. Here are quotations from a few of many similar letters received from former patrons: "My wife and I were members of your tours "Z" and "C" a few weeks ago. We want you to know that the three weeks during which we were guests of the Union Pacific were most enjoyable and will long be remembered;" — "I would be most ungrateful if I did not tell you how much I appreciated and enjoyed my recent "YRG" tour" — "I wish to thank the Union Pacific Railroad for providing me with an exceptionally fine vacation on my recent "YT" tour."

TO JOIN A TOUR select the trip that takes you to the regions you'd like to visit. Then fill out the coupon on page 71 and mail or take it to the travel agent or representative whose name appears on the back cover or on page 72. He will gladly furnish additional information or personal assistance. OR, write Union Pacific Department of Tours, 517 W. Adams Street, Chicago 6, Illinois.





There are many fine saddle trails in Yellowstone.

GRAND TETON — YELLOWSTONE NATIONAL PARKS JACKSON HOLE SALT LAKE CITY - DENVER

TOUR "YT"

PULLMAN AND COACH
ACCOMMODATIONS

9 DAYS

ALL EXPENSE — IN PULLMAN — LOW AS **\$255.20** Plus Tax

IN RECLINING SEAT COACH **\$201.92** Plus Tax

All Meals Are Included in the Cost.

SATURDAY DEPARTURES FROM CHICAGO.

Many folks have expressed a preference for our "YT" Tour. It not only gives one a complete circle tour of Yellowstone, but it also takes one through Grand Teton National Park, bordering Yellowstone six miles to the South. Included, too, is a motor trip into the Jackson Hole country, fabled crossroads and rendezvous of early day fur expeditions.

In the Grand Tetons you'll see some of the most magnificent mountain scenery to be found anywhere. Often likened to the Alps of Switzerland, the Teton Range is said to "look more like you would expect mountains to look than any other range in America."



Teton Mountains looking across Jackson Lake.

In your four days of sightseeing through the Parks, you'll see the spectacular wonders of Yellowstone — its geysers, paint pots, boiling springs, its forests, lakes and terraces, the Great Falls and Canyon of the Yellowstone River. Overnight stops are made at Old Faithful Inn, the new Jackson Lake Lodge and the Canyon Hotel.

Add to Nature's great "Show of Shows" a day of sightseeing in beautiful Salt Lake City and another in and about Denver and you have about as interesting a vacation as one could imagine . . . and it requires only nine days away from home!

All arrangements are made in advance — it's an all-expense, escorted tour; you're relieved of all travel details and free to enjoy a really carefree vacation.

DAY-BY-DAY STORY

First Day. Leaving Chicago during the afternoon your first hours will be spent in meeting your congenial companions and you'll watch the passing panorama — the interesting "prairie lands" of Illinois and Iowa's waving corn fields. Dinner is served in the Dining Car.

Second Day. After a restful night you awaken to find yourself rolling smoothly over western Nebraska, in mid-morning entering Cheyenne, Wyoming. You sense the fact that this is the West of history and romance, of high altitudes and jagged mountain peaks — as you follow the route of the pioneers, the Argonauts of 1849 and the Pony Express. You'll no doubt retire early in anticipation of your arrival at West Yellowstone, and adventure in a new world of wonders.

Third Day. You detrain at West Yellowstone at 7:30 AM and have breakfast in Union Pacific's Dining Lodge.

MOTOR TOUR OF YELLOWSTONE AND GRAND TETON NATIONAL PARKS

Immediately after breakfast you board comfortable motor buses for the trip via the Fountain Paint Pot and Lower, Middle and Upper Geyser Basins on your way to Old Faithful Inn, reached just in time for luncheon. Old Faithful Geyser, perhaps the most famous, certainly the most regular, is but a few steps from the Inn.

The entire afternoon and evening is free for you to spend at Old Faithful. There is much to occupy one's time. You'll want to take one of the hikes of the geyser basin conducted by a Park Ranger-Naturalist and watch the almost hourly eruptions of Old Faithful Geyser. There is dancing and other entertainment in the evening

Fourth Day. Leaving Old Faithful after breakfast, you begin your trip south to the awe-inspiring Tetons in Grand Teton National Park. A stop is made en route at Kepler Cascades. You cross and recross the Continental Divide traveling via West Thumb Junction and Lewis Canyon. Your destination — the new Jackson Lake Lodge — is reached at 11:20 AM — in time for luncheon. Spacious, tastefully furnished rooms with bath are provided in guest-lodges but a short walk from the main lodge.

After luncheon you begin a sightseeing tour of Grand Teton National Park to Moose, Wyoming, with stops at the Park Museum and the Chapel of the Transfiguration. You return to Jackson Lake Lodge about 3:45 PM.

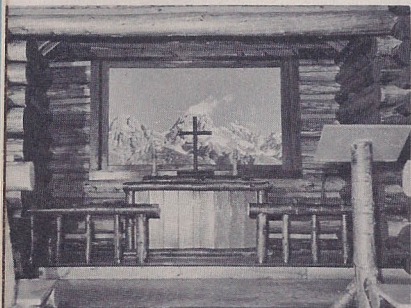
Fifth Day. The morning provides ample time to hike, fish, climb, or to just relax and gaze in idle comfort at the incomparable scenery.

Departing after luncheon for Grand Canyon, part of your journey will be over the route traveled the previous day. You'll motor along the shores of Jackson and Yellowstone Lakes for many miles. Stops will be made at interesting points, including West Thumb Geyser Basin, Mud Volcano, the Dragon's Mouth, then on to Artist Point for an inspiring view of the Grand Canyon of the Yellowstone River and the great Lower Falls. Now on to the hotel for dinner and overnight. Dancing and other entertainment in the spacious lounge will round out the evening.

Sixth Day. Departure from Grand Canyon is scheduled this morning to bring you to Mammoth Hot Springs in time for luncheon in the Mammoth Terrace Dining Room. The route is by way of Dunraven Pass and along the base of Mt. Washburn, with a stop at Tower Fall — one of the outstanding scenic features of the Park.

There will be time to view the many vari-tinted terraces and to visit the Park Museum before departing for West Yellowstone. Return is

*Grand Tetons seen through altar window,
Chapel of the Transfiguration, Jackson Hole.*



*New Jackson Lake Lodge and Typical
Guest Cottages Grand Teton National Park.*



made via Apollinaris Spring, Obsidian Cliff and Gibbon Canyon. On arrival West Yellowstone, dinner in the dining lodge — then “All Aboard” — Salt Lake City bound.

Seventh Day. Motor buses meet your train at Salt Lake City and take you to the Hotel Utah for a delightful breakfast — leaving hotel at 9:00 AM for a trip to famous Saltair Beach, where you “can’t sink,” should you elect to take a dip in Great Salt Lake. You return to the Temple Grounds in time for the noon organ recital in the Tabernacle and a conducted tour of the grounds. Luncheon at Hotel Utah. At 3:30 PM motor tour of Salt Lake City, including business and residential sections, State Capitol and University of Utah, terminating at Denver & Rio Grande Western R.R. Station. You leave at 5:30 PM for Denver.

Eighth Day. Breakfast on the train before arrival Denver. You board motor buses immediately for an historic and scenic trip which includes the Civic Center, parks, Park of the Red Rocks and Denver’s Mountain Parks, en route to the old mining towns of Blackhawk and Central City, where a stop-over is made to visit the Opera House, Teller House and other points of interest. Luncheon at the Teller House — time to browse around a bit — then back to Denver where you’ll board the streamliner “City of Denver” for Chicago.

Again it is a pleasure to watch the ever-changing landscape from your train window. But now your tour companions are your friends and together you re-live much of what you have seen, and you enjoy a sense of camaraderie that only comes from such a happy association.

Ninth Day. Breakfast in the dining car, a last “look around” as your train rolls quietly into Chicago, then happy adieu . . . and memories of a delightful, funfuf, carefree vacation!

"YT" TOURS LEAVE CHICAGO AT 2:15 PM ON SATURDAYS AS FOLLOWS:

| | | |
|-------------------|-------------------|--------------------|
| YT-1 Sat. June 15 | YT-5 Sat. July 13 | YT- 9 Sat. Aug. 10 |
| YT-2 Sat. June 22 | YT-6 Sat. July 20 | YT-10 Sat. Aug. 17 |
| YT-3 Sat. June 29 | YT-7 Sat. July 27 | YT-11 Sat. Aug. 24 |
| YT-4 Sat. July 6 | YT-8 Sat. Aug. 3 | |

DETAILED SCHEDULE

(STANDARD TIME)

| | | | |
|-------------------------|----------|----------|----------------|
| Lv. Chicago, Ill. (CST) | 2:15 PM | Saturday | C.M.St.P.&P. |
| Ar. Omaha, Nebr. | 11:15 PM | Saturday | C.M.St.P.&P. |
| Lv. Omaha, Nebr. | 11:45 PM | Saturday | Un. Pac. R. R. |
| Lv. Ogden, Utah (MST) | 8:55 PM | Sunday | Un. Pac. R. R. |
| Ar. West Yellowstone | 7:30 AM | Monday | Un. Pac. R. R. |

MOTOR TOUR OF YELLOWSTONE AND GRAND TETON NATIONAL PARKS

| | | | |
|---|----------|-----------|----------------|
| Lv. West Yellowstone | 9:30 AM | Monday | Motor |
| Ar. Old Faithful Inn | 11:55 AM | Monday | Motor |
| Headquarters: Old Faithful Inn. | | | |
| Lv. Old Faithful Inn | 9:15 AM | Tuesday | Motor |
| Via Kepler Cascades and Lewis Canyon. | | | |
| Ar. Jackson Lake Lodge | 11:20 AM | Tuesday | Motor |
| Afternoon sightseeing tour of Grand Teton National Park. | | | |
| Lv. Jackson Lake Lodge | 12:45 PM | Wednesday | Motor |
| Ar. Canyon Hotel | 4:45 PM | Wednesday | Motor |
| Lv. Canyon Hotel | 9:45 AM | Thursday | Motor |
| Via Dunraven Pass and base of Mt. Washburn with stop at Tower Fall. | | | |
| Ar. Mammoth Hot Springs | 12:30 PM | Thursday | Motor |
| Luncheon - Mammoth Terrace Dining Room. | | | |
| Lv. Mammoth Hot Springs | 2:30 PM | Thursday | Motor |
| Via Apollinaris Spring, Obsidian Cliff and Gibbon Canyon. | | | |
| Ar. West Yellowstone, Montana | 5:10 PM | Thursday | Motor |
| Lv. West Yellowstone, Montana | 7:30 PM | Thursday | Un. Pac. R. R. |
| Ar. Salt Lake City, Utah | 7:40 AM | Friday | Un. Pac. R. R. |
| Headquarters: Hotel Utah. Sightseeing Program. | | | |
| Lv. Salt Lake City, Utah | 5:30 PM | Friday | D.&R.G.W.R.R. |
| Via Moffat Tunnel | | | |
| Ar. Denver, Colorado | 8:00 AM | Saturday | D.&R.G.W.R.R. |
| Sightseeing Program. | | | |
| Lv. Denver, Colorado | 3:30 PM | Saturday | Un. Pac. R. R. |
| Ar. Omaha, Nebr. (CST) | 12:30 AM | Sunday | Un. Pac. R. R. |
| Ar. Chicago, Ill. (CST) | 8:45 AM | Sunday | C.M.St.P.&P. |

COMPLETE COST OF "YT" TOUR

From and To Chicago

| | Including Rail Ticket | Plus Tax | Total Cost Each Person |
|-------------------|-----------------------|----------|------------------------|
| Using Coach Seat | \$201.92 | \$12.36 | \$214.28 |
| 2 in Lower Berth | 225.20 | 16.99 | 272.19 |
| 1 in Lower Berth | 273.27 | 18.80 | 292.07 |
| 1 in Upper Berth | 264.62 | 17.93 | 282.55 |
| 2 in Bedroom | 276.90 | 19.16 | 296.06 |
| 2 in Compartment | 280.52 | 19.52 | 300.04 |
| 3 in Compartment | 266.06 | 18.07 | 284.13 |
| 2 in Drawing Room | 297.67 | 21.24 | 318.91 |
| 3 in Drawing Room | 277.49 | 19.22 | 296.71 |

TOUR FEATURES ONLY
(See note below)

| Without Rail Ticket | Plus Tax |
|---------------------|----------|
| \$131.27 | \$ 5.29 |
| 156.35 | 7.10 |
| 174.42 | 8.91 |
| 165.77 | 8.04 |
| 178.05 | 9.27 |
| 181.67 | 9.63 |
| 167.21 | 8.18 |
| 198.82 | 11.35 |
| 178.64 | 9.33 |

NOTE: Complete costs shown include rail fare from Chicago. Persons from other points of origin joining tour at Chicago, add cost of rail ticket from home city via route of tour, to the tour feature cost (without rail ticket) shown above.

TICKET ROUTE: C.M.St.P. & P. Chicago to Omaha, Un. Pac. to West Yellowstone, Un. Pac. to Ogden, D. & R.G.W. to Denver, Un. Pac. to Omaha, C.M.St.P. & P. to Chicago.

Rates for children 5 and under 12 years of age on request.

ALL MEALS INCLUDED



World's loftiest suspension bridge spans famous Royal Gorge.

YELLOWSTONE —
GRAND TETON
NATIONAL PARKS

—
ROYAL GORGE

—
SALT LAKE CITY

—
COLORADO SPRINGS

—
GARDEN OF THE GODS

—
PIKES PEAK

—
DENVER

TOUR "YRG"

PULLMAN AND COACH
ACCOMMODATIONS

10 DAYS

ALL EXPENSE — IN PULLMAN — LOW AS **\$284.07** Plus Tax

IN RECLINING SEAT COACH **\$227.37** Plus Tax

All Meals Are Included in the Cost.

SATURDAY DEPARTURES FROM CHICAGO.

The Yellowstone-Royal Gorge "YRG" tour, always so popular in the past, now has an added attraction — GRAND TETON NATIONAL PARK — all included in a ten-day vacation. It meets the time requirements of almost everyone and includes the feature attractions of each of the vacation regions visited.

You see Yellowstone of course — all of its amazing phenomena — with overnight stops at Grand Canyon Hotel and Old Faithful Inn. Included, too, is sightseeing through Grand Teton National Park. Then beautiful Salt Lake City — its points of historic interest; the organ recital at the Mormon Tabernacle; Saltair Beach. You travel through the

spectacular Royal Gorge of the Arkansas River en route to Colorado Springs where two nights are spent at the Antlers Hotel.

Here you'll motor to the summit of Pikes Peak and see the Garden of the Gods.

A memorable trip to Denver, the mile high city, is included, too.

A splendid vacation!

DAY-BY-DAY STORY

First Day. Your vacation adventure begins when you step aboard the train at Chicago and meet the other members of your group.

Second Day. A day of pleasant travel while crossing Wyoming into Idaho.

Third Day. Arrive West Yellowstone, Montana — then away on a thrilling three-day circle trip of Yellowstone and Grand Teton National Parks. Today you motor to Mammoth Hot Springs, via Norris Geyser Basin and Obsidian Cliff. Luncheon in the Mammoth Terrace Dining Room, with time to visit the National Park Museum before departing for the Canyon Hotel — your headquarters for that night. Stops will be made at points of interest en route, including Artist Point, for your first view of the Canyon and its Great Falls.

The Canyon Hotel has one of the most beautiful lounges of any hotel in America. Entertainment and dancing in the lounge in the evening.

Fourth Day. Words are inadequate to describe the Canyon and the Yellowstone River, a mighty cataract of water coursing ceaselessly and thunderously down its precipitous incline. Here is one of nature's most inspiring spectacles, and you will wish to view it from many vantage points. This morning you will no doubt want to go down one of the trails and view the falls and canyon from the bottom. There are also thrilling horseback trails around the rim.

Departing about 12:45 PM you'll motor via Yellowstone Lake, West Thumb and Midway Geyser Basins and Fountain Paintpots, with stops at principal attractions, en route to Old Faithful Inn for dinner and lodging. You reach Old Faithful at 5:00 PM. There is dancing and other entertainment in the evening.

Fifth Day. Leave at 9:15 AM for Grand Teton National Park via Kepler Cascades and Lewis Canyon arriving at Jackson Lake Lodge in time for luncheon. You will have time to relax and enjoy the incomparable beauty of the Tetons before your departure at 3:00 PM.

This afternoon you travel through Grand Teton National Park and famous Jackson Hole, and cross spectacular Teton Pass to Victor, Idaho. Dinner at Timberline Cafe — then by train overnight to Salt Lake City.



Sixth Day. A day in Salt Lake City, seeing the sights, with visits to Saltair Beach and the organ recital in the Mormon Tabernacle.

Seventh Day. A train ride you will never forget. Early this morning you're in the heart of the Colorado Rockies. Tennessee Pass, elevation 10,221 feet, and highest point reached by rail en route, is reached at 7:00 AM. Now you descend rapidly — over 5000 feet in the next 120 miles — and about 10:10 AM reach spectacular Royal Gorge, Grand Canyon of the Arkansas River. The walls of this mighty chasm tower over a thousand feet, and are spanned by the world's highest bridge, 1053 feet above the track.

Arrive Colorado Springs in time for luncheon at the Antlers Hotel, your headquarters for two nights. Outdoor swimming pool for those who care to take a dip. About 6:00 PM you leave the hotel for a nearby ranch to enjoy a delightfully different chuck-wagon dinner followed by entertainment under the stars — Western style. You return to the hotel for the night.

Eighth Day. Saturday morning is open for resting, shopping or independent action. Cars will leave hotel at 1:45 PM for a thrilling, seventy-five mile trip to the very summit of Pikes Peak (elevation 14,110 feet), the Garden of the Gods, Manitou and historic Ute Pass. Breakfast, luncheon and dinner at the hotel.

Typical Colorado Scene.



Ninth Day. After an early breakfast at the hotel on Sunday, you will be transferred to the station, continuing by train to Denver.

Motor buses will be waiting to take you on a one and one-half hour motor sightseeing tour of Denver — viewing the many beautiful parks and boulevards of this Mile High City; the business and residential sections; Civic Center, U. S. Mint and other attractions. Luncheon will be served at the Cosmopolitan Hotel. You will have a little time after lunch for window shopping. Buses will transfer you from the Cosmopolitan Hotel to the Union Station in time to board the streamliner "City of Denver" leaving at 3:30 PM.

After a satisfying dinner in the attractive dining car you will want to spend this last evening of the tour in the lounge car with members of your party, reliving the many happy experiences of the past few days.

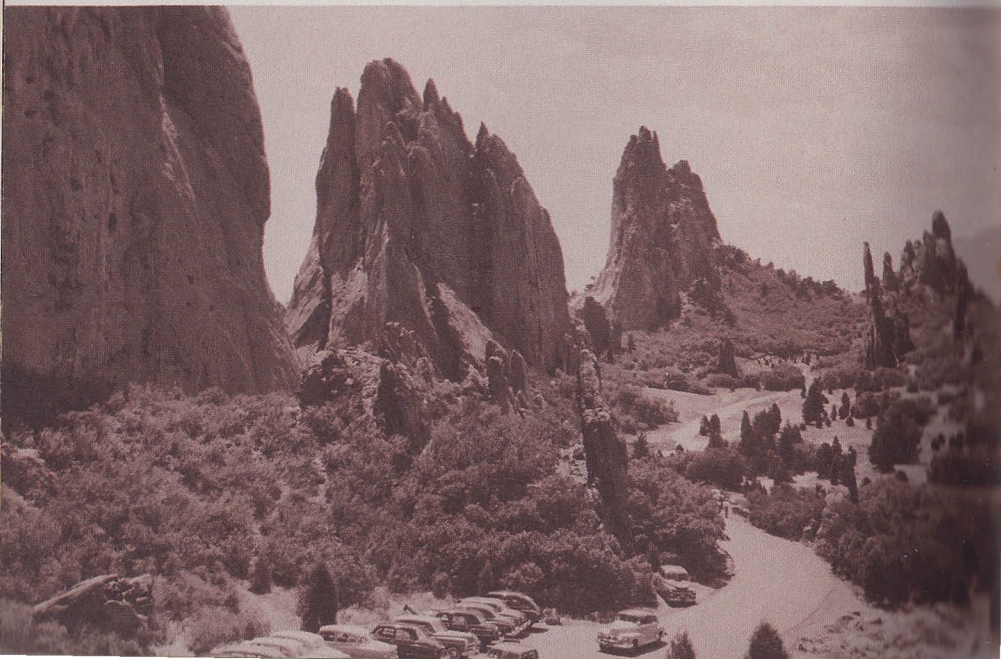
Tenth Day. Breakfast — then Chicago. You will agree this has been one of the most delightful vacations you have experienced.

"YRG" TOURS LEAVE CHICAGO AT 2:15 PM ON SATURDAYS AS FOLLOWS:

YRG-1 Sat. June 15
YRG-2 Sat. June 22
YRG-3 Sat. June 29
YRG-4 Sat. July 6

YRG-5 Sat. July 13
YRG-6 Sat. July 20
YRG-7 Sat. July 27
YRG-8 Sat. Aug. 3

YRG- 9 Sat. Aug. 10
YRG-10 Sat. Aug. 17
YRG-11 Sat. Aug. 24



DETAILED SCHEDULE

(STANDARD TIME)

| | | | |
|----------------------------------|----------|----------|----------------|
| Lv. Chicago, Ill. (CST) | 2:15 PM | Saturday | C.M.St.P.&P. |
| Lv. Omaha, Nebr. | 11:45 PM | Saturday | Un. Pac. R. R. |
| Lv. Ogden, Utah (MST) | 8:55 PM | Sunday | Un. Pac. R. R. |
| Ar. West Yellowstone, Mont. | 7:30 AM | Sunday | Un. Pac. R. R. |

MOTOR TOUR OF YELLOWSTONE NATIONAL PARK

| | | | |
|--|----------|-----------|----------------|
| Lv. West Yellowstone, Mont. | 9:30 AM | Monday | Motor |
| Via Norris Geyser Basin and Obsidian Cliff. | | | |
| Ar. Mammoth Hot Springs | 12:20 PM | Monday | Motor |
| Luncheon Mammoth Terrace Dining Room. | | | |
| Lv. Mammoth Hot Springs | 1:45 PM | Monday | Motor |
| Via Artist Point. | | | |
| Ar. Canyon Hotel | 4:30 PM | Monday | Motor |
| Headquarters: Canyon Hotel. | | | |
| Lv. Canyon Hotel | 12:45 PM | Tuesday | Motor |
| Via West Thumb, Midway Geyser Basin and Fountain Paintpot. | | | |
| Ar. Old Faithful Inn | 5:00 PM | Tuesday | Motor |
| Headquarters: Old Faithful Inn. | | | |
| Lv. Old Faithful Inn | 9:15 AM | Wednesday | Motor |
| Via Kepler Cascades and Lewis Canyon. | | | |
| Ar. Jackson Lake Lodge | 11:20 AM | Wednesday | Motor |
| Luncheon Jackson Lake Lodge Dining Room. | | | |
| Lv. Jackson Lake Lodge | 3:00 PM | Wednesday | Motor |
| Ar. Victor, Idaho | 6:30 PM | Wednesday | Motor |
| Lv. Victor, Idaho | 8:15 PM | Wednesday | Un. Pac. R. R. |
| Ar. Salt Lake City, Utah | 7:40 AM | Thursday | Un. Pac. R. R. |
| Headquarters: Hotel Utah. Sightseeing Program. | | | |
| Lv. Salt Lake City, Utah | 5:30 PM | Thursday | D.&R.G.W.R.R. |
| Ar. Royal Gorge, Colo. | 10:10 AM | Friday | D.&R.G.W.R.R. |
| Lv. Royal Gorge, Colo. | 10:20 AM | Friday | D.&R.G.W.R.R. |
| Ar. Colorado Springs, Colo. | 1:00 PM | Friday | D.&R.G.W.R.R. |
| Headquarters: Antlers Hotel. Sightseeing Program | | Saturday. | |
| Lv. Colorado Springs, Colo. | 8:11 AM | Sunday | D.&R.G.W.R.R. |
| Ar. Denver, Colo. | 9:50 AM | Sunday | D.&R.G.W.R.R. |
| Headquarters: Cosmopolitan Hotel. Sightseeing Program. | | | |
| Lv. Denver, Colo. | 3:30 PM | Sunday | Un. Pac. R. R. |
| Lv. Omaha, Nebr. (CST) | 12:40 AM | Monday | C.M.St.P.&P. |
| Ar. Chicago, Ill. (CST) | 8:45 AM | Monday | C.M.St.P.&P. |

COMPLETE COST OF "YRG" TOUR

**From and
To Chicago**

| | Including Rail Ticket | Plus Tax | Total Cost Each Person |
|------------------------|--------------------------|-------------|---------------------------|
| Using Coach Seat | \$227.37 | \$12.88 | \$240.25 |
| 2 in Lower Berth | 284.07 | 17.85 | 301.92 |
| 1 in Lower Berth | 305.57 | 20.00 | 325.57 |
| 1 in Upper Berth | 295.22 | 18.97 | 314.19 |
| 2 in Bedroom | 309.85 | 20.43 | 330.28 |
| 2 in Compartment | 314.20 | 20.86 | 335.06 |
| 3 in Compartment | 296.99 | 19.14 | 316.13 |
| 2 in Drawing Room | 334.62 | 22.91 | 357.53 |
| 3 in Drawing Room | 310.61 | 20.50 | 331.11 |

TOUR FEATURES ONLY (See note below)

| | Without Rail Ticket | Plus Tax |
|--|------------------------|-------------|
| | \$156.72 | \$ 5.81 |
| | 185.22 | 7.96 |
| | 206.72 | 10.11 |
| | 196.37 | 9.08 |
| | 211.00 | 10.54 |
| | 215.35 | 10.97 |
| | 198.14 | 9.25 |
| | 235.77 | 13.02 |
| | 211.76 | 10.61 |

NOTE: Complete costs shown include rail fare from Chicago. Persons from other points of origin joining tour at Chicago, add cost of rail ticket from home city via route of tour, to the tour feature cost (without rail ticket) shown above.

TICKET ROUTE: C.M.St.P. & P. Chicago to Omaha, Un. Pac. to West Yellowstone, Un. Pac. to Ogden, D. & R.G.W. to Denver, Un. Pac. to Omaha, C.M.St.P. & P. to Chicago.

Rates for children 5 and under 12 years of age on request.

ALL MEALS INCLUDED





Temple of Sinawava, Zion Nat'l Park.

BRYCE CANYON — GRAND CANYON ZION NATIONAL PARKS

| | | |
|---------------------|---|----------------|
| CEDAR BREAKS | SALT LAKE CITY | DENVER |
| TOUR "Z" | PULLMAN AND COACH ACCOMMODATIONS | 12 DAYS |

ALL EXPENSE — IN PULLMAN — LOW AS \$310.47 Plus Tax

IN RECLINING SEAT COACH \$247.72 Plus Tax

All Meals Are Included in the Cost.

SATURDAY DEPARTURES FROM CHICAGO.

Scenically, America is a land of contrasts, with many areas of exciting beauty. But if you seek a place that is really unusual, be sure to visit this region, usually referred to as the Southern Utah-Arizona Wonderlands. Its splendor is unparalleled.

Here the forces of nature have formed awe-inspiring, extravagantly colored canyons and mountains — a "Paradise of Color" and dreamland of artist and photographer.

Envision them if you can — the huge monoliths of Zion National Park; the fairyland of stone and color named Bryce Canyon National

Park; the painted cliffs of Cedar Breaks National Monument — all in Utah — together with the grandeur and vastness of Grand Canyon National Park in Arizona. Nowhere else on the North American continent is to be seen such an amazing concentration of scenic grandeur and geological wonders.

Add to these such along-the-way attractions as Mt. Carmel Highway, Kaibab and Dixie National Forests, plus a day of sightseeing in Salt Lake City and in Denver, and you have a vacation trip you will never forget.

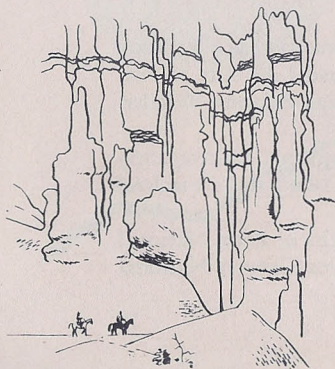
And note, please, that the "Z" Tour schedule calls for two days each at Zion, Grand Canyon and Bryce Canyon in order that you may fully enjoy these monuments to Nature's handiwork.

DAY-BY-DAY STORY

First Day. You will spend the afternoon getting acquainted with other members of your party, perhaps enjoying a friendly game of cards in the lounge car as the train traverses Illinois and the rolling farmlands of Iowa. Dinner in the dining car.

Second Day. The rich agricultural region of Nebraska is passed during the night as you gradually gain elevation. Cheyenne, Wyoming, is reached in mid-morning. Soon after, you cross Sherman Hill, highest point on the Union Pacific (8013 ft.), then through country rich in historical association of the Old Oregon Trail, the Mormon exodus, the Argonauts of 1849 and the Pony Express. Near Laramie, the white peaks of Snowy Range are seen to the south. Near Rawlins you cross the Continental Divide. At Green River fantastically shaped painted buttes rise precipitously. Continuing down Echo Canyon, past Devil's Slide, and through Weber Canyon, you reach Salt Lake City, Utah, in late evening. A short pause is made here until departure of the overnight train for Cedar City.

Third Day. You may occupy your Pullman or coach until 7:00 AM at Cedar City, then breakfast at El Escalante Hotel, just a few steps



Interior of modern standard cabin in Utah-Arizona Parks.



from the station. At 8:30 AM you leave for seven days of thrilling adventure.

MOTOR TOUR OF UTAH-ARIZONA WONDERLANDS

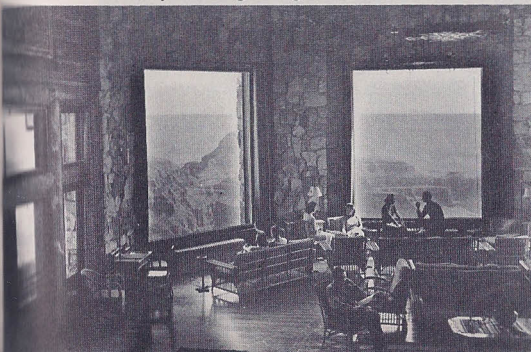
The way from Cedar City to Zion National Park is interesting for its scenery and its people. You pass through several Mormon villages, all of which still bear the marks of early-day settlement — weather-beaten houses of handhewn timbers, fenced with stone; flagstone walks hoary with age. You pass through the heart of Utah's "Dixie," so named because its climate so closely resembles that of the South. Here are grown figs, pomegranates, almonds, cotton, tobacco and the most luscious melons that ever tickled the palate. Soon the desert is left behind and the colorful mountains of the Zion country come into view. You arrive at Zion Park Lodge at 10:45 AM.

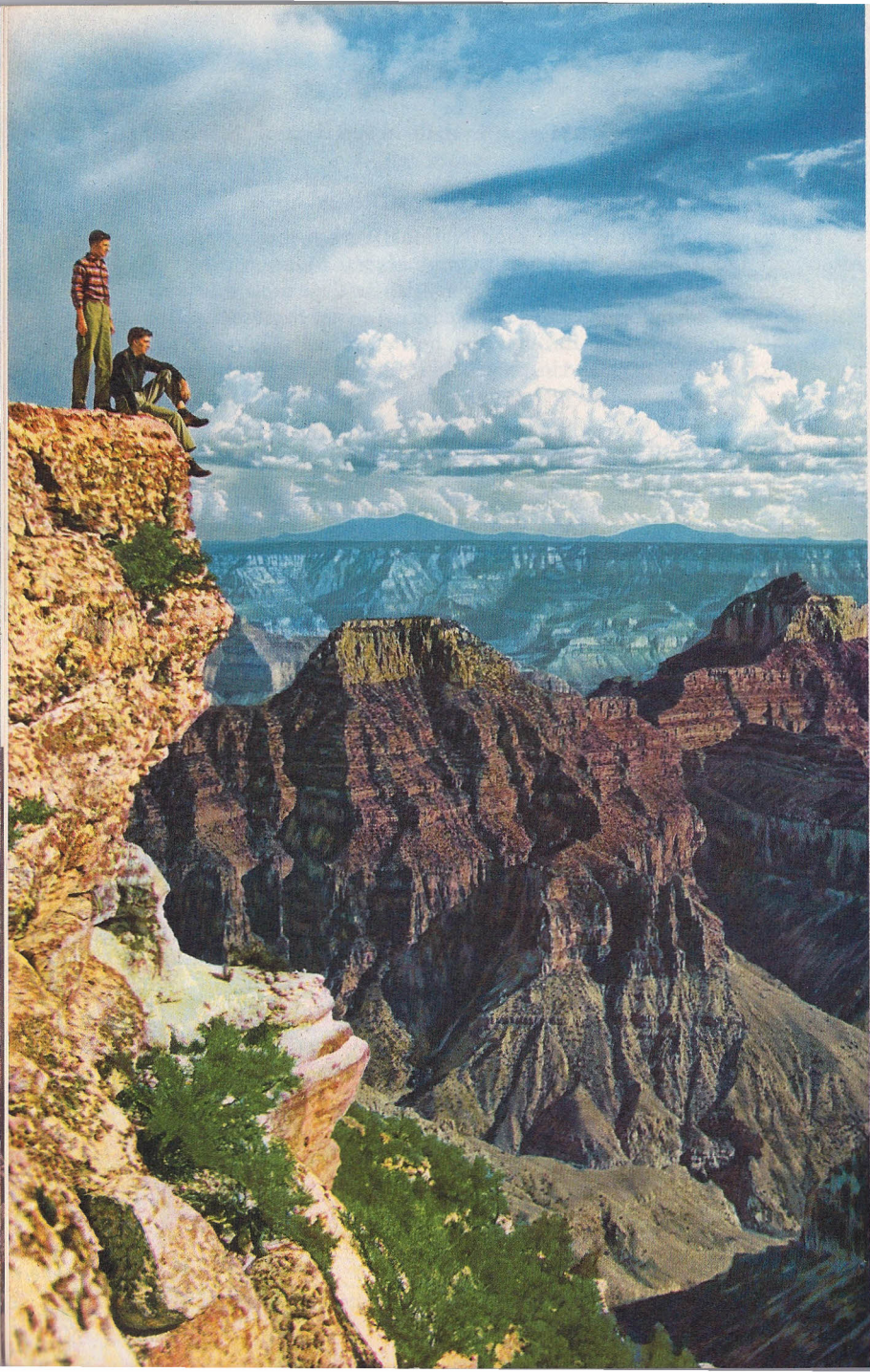
When you are settled in your comfortable cabin, it will be time for luncheon in the central lodge building. In the afternoon you may wish to take a dip in the pool. Entertainment, nature talks, movies, dancing, plenty of activity for the evening hours.

Fourth Day. This morning you may wish to explore some of the miles of trails — ride or hike — the East Rim, the West Rim. After luncheon a trip by motor to the Temple of Sinawava and a hike with the Ranger-Naturalist to the Narrows. You will be overwhelmed at the beauty and magnitude of this inspiring region. Later another fun-filled evening and a refreshing night's rest.

Fifth Day. You leave Zion at 9:00 AM for the Wonder of Wonders — the Grand Canyon. On the way you pass through the famous Mt. Carmel Tunnel along the Mt. Carmel Highway, with six huge tunnel portals through which you see masterpieces of scenic beauty. Then Kanab, residence of movie actors while making western pictures in nearby canyons. Soon the cool quiet of Kaibab Forest is reached and someone in the party sights a deer. Soon dozens of them are seen and finally you lose count. The Kaibab is also the home of the famous

The broad windows of the Lodge lounge overlook the Grand Canyon.





white-tail squirrel found nowhere else in the world. Suddenly you are at Grand Canyon Lodge where an enthusiastic welcome awaits you.

You will not want to wait to be assigned to a cabin, but off you dash for your first glimpse of the mighty Grand Canyon. Perhaps it will be from one of the large picture windows in the lounge of the Lodge, or right out on the lofty North Rim, but no matter where you get that first view of this vast abyss, you will be overwhelmed. Words cannot describe it — you must see it for yourself. You will finally pull yourself away for the formalities of getting settled and ready for a tasty luncheon in the charming Lodge dining room. That evening there will be informal entertainment, music and dancing and, perhaps, a moonlight stroll on the rim.

Sixth Day. The morning is free for hiking, horseback riding or to just relax. After luncheon a four hour motor trip takes you to Point Imperial and Cape Royal for magnificent views of the canyon. Point Imperial is the highest point on the canyon rim.

Seventh Day. Leaving at 8:30 AM you travel back over the winding road, deep into the Kaibab . . . out across the plains . . . through sparkling canyons . . . past Vermillion Cliffs . . . through Red Canyon . . . then, Bryce Canyon the beautiful — like a glimpse of another world — reached at 1:30 PM.

Sunset enlivens the myriad tints of Bryce Canyon's fragile formations and presents the towering temple peaks, the colorful sculptured depths at their best. Entertainment and dancing enliven the evenings at the Lodge.

Eighth Day. After a solid night's rest in this cool mountain atmosphere, you are up early to view Bryce under the first rays of the rising sun. Under such light the canyon presents an entirely new and different aspect. You have practically all day to enjoy this fairyland of form and color . . . from the rim . . . hiking down the trails with Ranger-Naturalist guided party for an absorbing explanation of the geology of the country . . . or perhaps as a member of a gay horseback party



following your colorful cowboy guide. At 3:00 PM a motor trip to Rainbow Point, with stops at Inspiration Point, Bryce Point, Little Bryce and Natural Bridge.

Ninth Day. Sunday morning is reserved for Church services and another opportunity to drink in the beauty of Bryce for future mental reference. Shortly after lunch you'll pack your bags . . . take one long, lingering look, then leave Bryce Canyon Lodge at 3:00 PM.

On the way to Cedar City a stop is made at Cedar Breaks National Monument, claimed by many to be the most colorful of the Southern Utah attractions. A vista of its tremendous formations, splashed with every color of the rainbow, will add another shock to your senses. In rustic Cedar Breaks Lodge you enjoy a hearty dinner. You depart at 6:45 PM for Cedar City — about an hour's ride. On the way you'll be able to look off to the south and get a distant view of the Temples of Zion which you left a few days ago.

There will be a short time for curio shopping at Cedar City before you depart at 9:00 PM en route to Salt Lake City.

Tenth Day. At 7:30 AM you are transferred from the Salt Lake City depot to the Hotel Utah for breakfast—leaving the hotel at 9:00 AM for a trip to famous Saltair Beach, where you can take a dip in Great Salt Lake, if you desire. You return to the Temple Grounds in time for the noon organ recital at the Tabernacle and conducted tour of the grounds. Luncheon at Hotel Utah. At 3:30 PM motor tour of Salt Lake City, including business and residential sections, State Capitol and University of Utah, terminating at Denver & Rio Grande Western R.R. Station. Leaving at 5:30 PM your train heads for Denver as you enjoy dinner in the dining car and a restful night's sleep.

Eleventh Day. Breakfast in the dining car before you reach Denver — then leave immediately for an interesting sightseeing trip, visiting the Civic Center, parks and residential district; continuing by way of Park of the Red Rocks and Bergen Park to Central City, early mining town, where gold was first discovered in this area. Here a guide will show you the old Opera House, still in use; and the famed hotel, the Teller House, where luncheon is served. Time to look around this interesting town before returning to Denver to board the streamliner "City of Denver," homeward bound.

You'll spend the evening reliving the stirring events of the past two weeks.

Twelfth Day. Arrive Chicago soon after breakfast. Fond farewells and promises to write and exchange snapshots bring to an end a glorious vacation.

"Z" TOURS LEAVE CHICAGO AT 2:15 PM ON SATURDAYS AS FOLLOWS:

Z-1 Sat. June 15
Z-2 Sat. June 22
Z-3 Sat. June 29
Z-4 Sat. July 6

Z-5 Sat. July 13
Z-6 Sat. July 20
Z-7 Sat. July 27
Z-8 Sat. Aug. 3

Z- 9 Sat. Aug. 10
Z-10 Sat. Aug. 17
Z-11 Sat. Aug. 24

DETAILED SCHEDULE

(STANDARD TIME)

| | | | |
|--------------------------|----------|----------|----------------|
| Lv. Chicago, Ill. (CST) | 2:15 PM | Saturday | C.M.St.P.&P. |
| Ar. Omaha, Nebr. | 11:15 PM | Saturday | C.M.St.P.&P. |
| Lv. Omaha, Nebr. | 11:45 PM | Saturday | Un. Pac. R. R. |
| Lv. Ogden, Utah (MST) | 8:50 PM | Sunday | Un. Pac. R. R. |
| Ar. Salt Lake City, Utah | 9:45 PM | Sunday | Un. Pac. R. R. |
| Lv. Salt Lake City, Utah | 11:00 PM | Sunday | Un. Pac. R. R. |
| Ar. Cedar City, Utah | 6:30 AM | Monday | Un. Pac. R. R. |

MOTOR TOUR OF UTAH-AZONA WONDERLANDS

| | | | |
|--|----------|-----------|----------------|
| Lv. Cedar City, Utah | 8:30 AM | Monday | Motor |
| Ar. Zion National Park | 10:45 AM | Monday | Motor |
| Headquarters: Zion Lodge. Sightseeing program. Nature walk, hiking, etc. | | | |
| Lv. Zion National Park | 9:00 AM | Wednesday | Motor |
| Via Mt. Carmel Highway and through beautiful Kaibab National Forest. | | | |
| Ar. Grand Canyon National Park | 1:00 PM | Wednesday | Motor |
| Headquarters: Grand Canyon Lodge. Nature walk, hiking, etc. | | | |
| Thursday afternoon Cape Royal-Point Imperial Side trip. | | | |
| Lv. Grand Canyon National Park | 8:30 AM | Friday | Motor |
| Through Red Canyon. | | | |
| Ar. Bryce Canyon National Park | 1:30 PM | Friday | Motor |
| Headquarters: Bryce Canyon Lodge. Nature walk, hiking, etc. | | | |
| Saturday afternoon Bryce Rim Trip to Rainbow Point. | | | |
| Lv. Bryce Canyon National Park | 3:00 PM | Sunday | Motor |
| Via Dixie and Powell National Forests. Dinner at Cedar Breaks Lodge. | | | |
| Ar. Cedar City, Utah | 7:45 PM | Sunday | Motor |
| Lv. Cedar City, Utah | 9:00 PM | Sunday | Un. Pac. R. R. |
| Ar. Salt Lake City, Utah | 4:30 AM | Monday | Un. Pac. R. R. |
| Headquarters: Hotel Utah, Sightseeing program. | | | |
| Lv. Salt Lake City, Utah | 5:30 PM | Monday | D.&R.G.W.R.R. |
| Ar. Denver, Colo. | 8:00 AM | Tuesday | D.&R.G.W.R.R. |
| Sightseeing program. | | | |
| Lv. Denver, Colo. | 3:30 PM | Tuesday | Un. Pac. R. R. |
| Ar. Omaha, Nebr. (CST) | 12:30 AM | Wednesday | Un. Pac. R. R. |
| Lv. Omaha, Nebr. (CST) | 12:40 AM | Wednesday | C.M.St.P.&P. |
| Ar. Chicago, Ill. (CST) | 8:45 AM | Wednesday | C.M.St.P.&P. |

COMPLETE COST OF "Z" TOUR

| From and To Chicago | Including Rail Ticket | Plus Tax | Total Cost Each Person |
|---------------------|--------------------------|-------------|---------------------------|
| Using Coach Seat | \$247.72 | \$14.88 | \$262.60 |
| 2 in Lower Berth | 310.47 | 20.45 | 330.92 |
| 1 in Lower Berth | 332.47 | 22.65 | 355.12 |
| 1 in Upper Berth | 321.77 | 21.58 | 343.35 |
| 1 in Roomette | 349.97 | 24.40 | 374.37 |
| 2 in Bedroom | 336.77 | 23.08 | 359.85 |
| 2 in Compartment | 341.27 | 23.53 | 364.80 |
| 3 in Compartment | 323.67 | 21.77 | 345.44 |
| 2 in Drawing Room | 362.12 | 25.62 | 387.74 |
| 3 in Drawing Room | 337.57 | 23.16 | 360.73 |

TOUR FEATURES ONLY

(See note below)

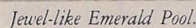
| Without Rail Ticket | Plus Tax |
|------------------------|-------------|
| \$163.37 | \$ 6.44 |
| 192.37 | 8.64 |
| 214.37 | 10.84 |
| 203.67 | 9.77 |
| 231.87 | 12.59 |
| 218.67 | 11.27 |
| 223.17 | 11.72 |
| 205.57 | 9.96 |
| 244.02 | 13.81 |
| 219.47 | 11.35 |

NOTE: Complete costs shown include rail fare from Chicago. Persons from other points of origin joining tour at Chicago, add cost of rail ticket from home city via route of tour, to the tour feature cost (without rail ticket) shown above.

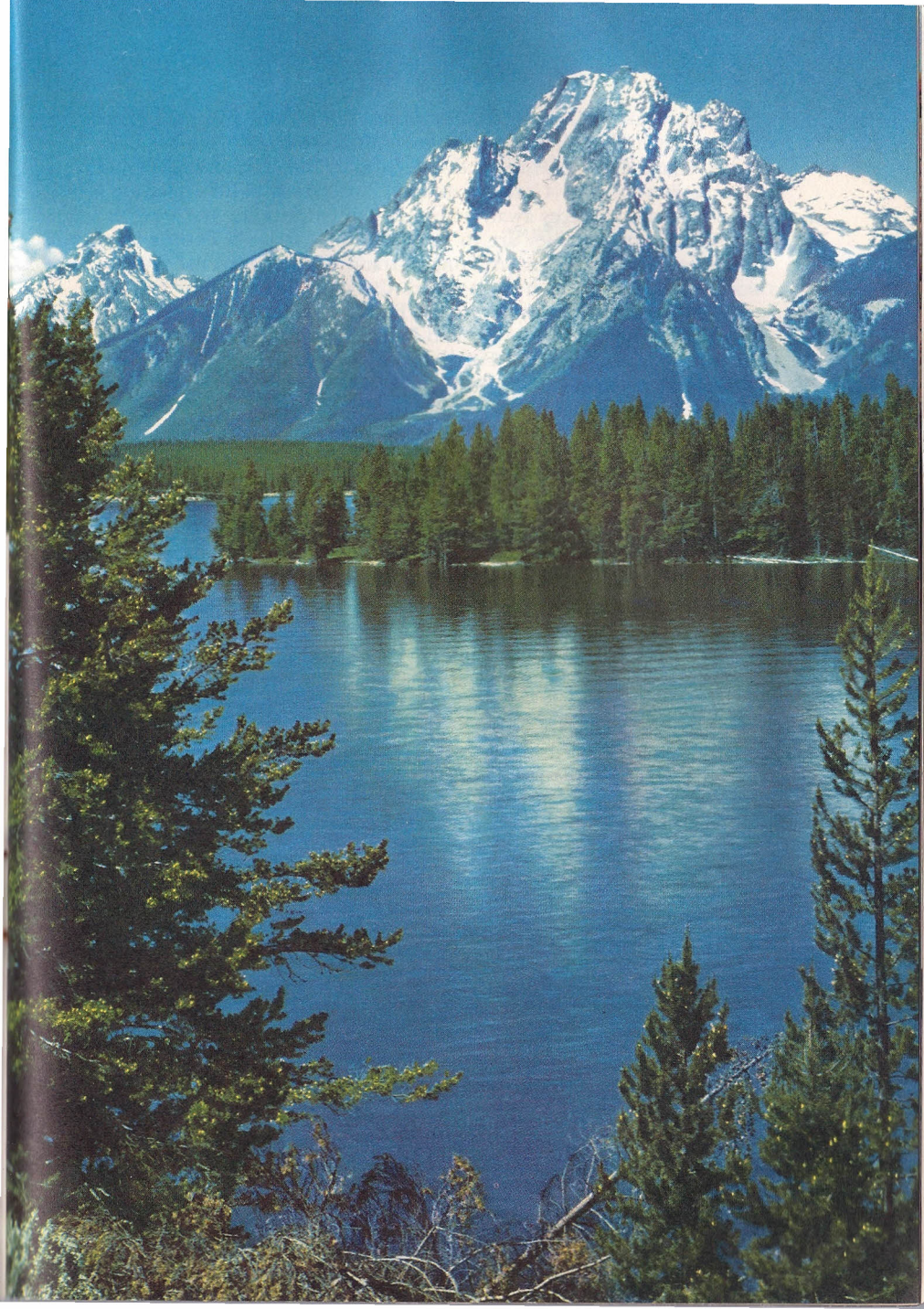
TICKET ROUTE: C.M.St.P. & P. Chicago to Omaha, Un. Pac. to Cedar City, Un. Pac. to Salt Lake City, D. & R.G.W. to Denver, Un. Pac. to Omaha, C.M.St.P. & P. to Chicago.

Rates for children 5 and under 12 years of age on request.

ALL MEALS INCLUDED



Jackson Lake . . . bordered by the Tetons



First, you see all of Grand Teton and Yellowstone National Parks — four days of sightseeing with overnight stops at Jackson Lake Lodge, Grand Canyon Hotel and Old Faithful Inn. Then five days and four nights in the Utah-Arizona Wonderlands where Nature's sculptured masterpieces await your rapt contemplation.

What wonders they are to behold! Zion National Park, a symphony in form and color; Arizona's Grand Canyon National Park, a world wonder in its own right; Bryce Canyon, masterpiece of erosion and color; the painted cliffs of Cedar Breaks National Monument, and the drive through beautiful Kaibab Forest, over Mt. Carmel Highway and through Red Canyon. Finally, a day of sightseeing in Salt Lake City and Denver.

We highly recommend the "YTZ" tour because it includes so much at such a moderate cost.

Here's the story — in brief:

DAY-BY-DAY STORY

First Day. Leave Chicago during the afternoon.

Second Day. Enjoy comfortable train travel while crossing Wyoming.

Third Day. Arrive Victor, Idaho at 7:15 AM. Breakfast at Timberline Cafe, then motor over spectacular Teton Pass into Jackson Hole — cross-roads of fur traders in the early 1800's and later a noted outlaw hideaway.

Inspiring views of the majestic Tetons are seen as you motor through Grand Teton National Park to the new Jackson Lake Lodge for a day's stopover.

You will have the afternoon and the following morning to enjoy the beauty of the "Tetons."

Fourth Day. Immediately after luncheon, you depart on a fascinating trip to the Grand Canyon Hotel, traveling along Jackson and Yellowstone Lakes. On the way stops are made at points of principal interest including the Paintpots, Fishing Cone, and other features of the West Thumb Geyser Basin.

Mud Volcano and the Dragon's Mouth are also visited en route to Artist Point for your first breath-taking view of the Grand Canyon of the Yellowstone River with its great Lower Falls in the distance.

Then on to the Canyon Hotel for dinner and one night's lodging. Dancing and entertainment in the evening.

Fifth Day. Morning drive via Dunraven Pass and Tower Fall to Mammoth Hot Springs for luncheon. You stop at Tower Fall, with a drop of 132 feet, one of the outstanding scenic features of the Park. Your route is through some forest sections where outstanding specimens of fir, balsam, spruce, cedar and aspen are to be found.

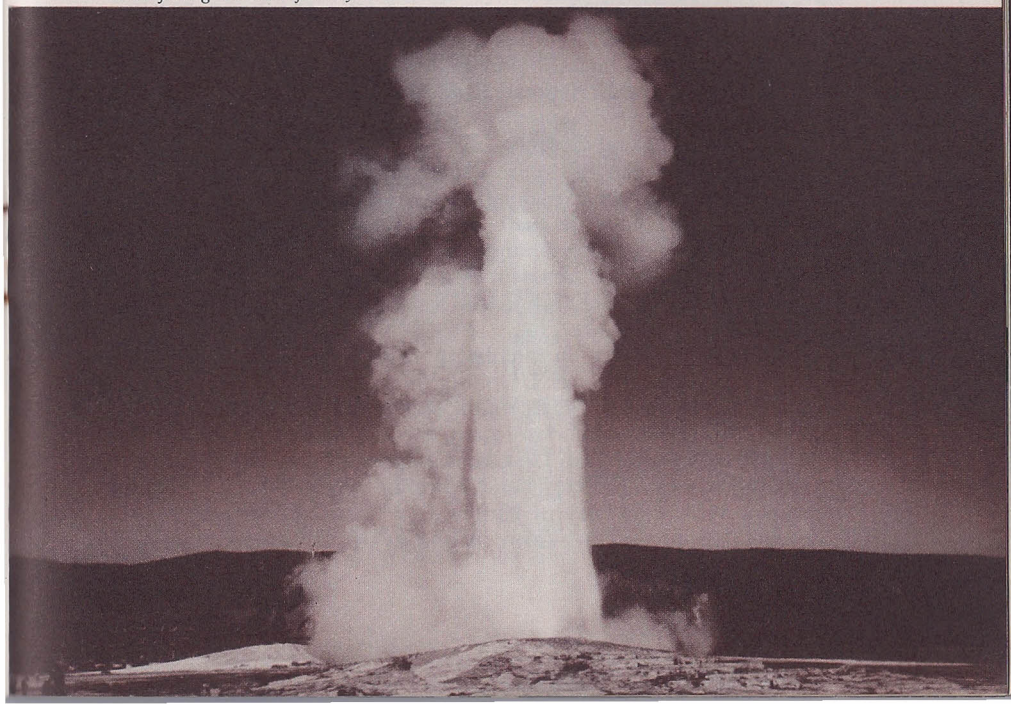
Time to view the vari-tinted terraces before departing at 1:15 PM for Old Faithful Inn — your headquarters for that night. On the way to Old Faithful Inn your trip is made via Apollinaris Spring, Obsidian Cliff, Norris and Gibbon Canyon Basins, with stops at principal attractions.

You arrive at Old Faithful Inn at 5:10 PM. There is dancing and other entertainment in the evening.

Sixth Day. You will have almost a full day at Old Faithful. There is much to occupy one's time. You'll want to take one of the hikes of the geyser basin conducted by a Park Ranger-Naturalist or watch the almost hourly eruptions of Old Faithful Geyser. At 4:00 PM you leave for West Yellowstone, dine at the dining lodge, then board your train — Salt Lake City bound.

Seventh Day. Pause for breakfast, then on to Lund, Utah, where you start a five day motor tour of the Utah-Arizona Wonderlands. Arrive Zion National Park in time for dinner — and overnight.

Eighth Day. A morning trip to the Temple of Sinawava and to the Narrows to view the Great White Throne and other sublimely colored peaks that form Zion Canyon. After luncheon leave for Grand Canyon — over the Mt. Carmel Highway, across the Prismatic Plains and through the Kaibab Forest. Spend two nights at Grand Canyon.





The Mormon Temple, Salt Lake City.

Ninth Day. Church services are available early Sunday morning. Most of the day is free to explore, afoot or on horseback, the marvels of this masterpiece of Nature's handiwork. At about 2:00 PM you motor to Cape Royal and Point Imperial, where exceptionally fine views of the Canyon may be obtained. Point Imperial is the highest point in Grand Canyon National Park. You return to the Lodge about 6:00 PM.

Tenth Day. Leaving after breakfast, retrace the route through Kaibab Forest, across the Prismatic Plains and through Red Canyon to Bryce Canyon. A motor trip along the rim to Rainbow Point is scheduled for 3:00 PM. Stops are made at Inspiration Point, Bryce Point and other vantage points. Entertainment at the Lodge in the evening.

Eleventh Day. Leave Bryce at 3:00 PM for Cedar City stopping en route at Cedar Breaks National Monument for dinner. Leave Cedar City 9:00 PM to Salt Lake City.

Twelfth Day. All day in interesting, historic Salt Lake City. Breakfast and luncheon at Hotel Utah. Sightseeing includes Saltair Beach on Great Salt Lake; the organ recital at Mormon Tabernacle; business and residential sections and a visit to the State Capitol. Departure at 5:30 PM via Denver & Rio Grande Western for Denver.

Thirteenth Day. Denver — and a motor tour of the city and its mountain parks — by way of Park of Red Rocks and Bergen Park to Central City, early mining town. A tour of the Opera House and the

Teller House where luncheon is served. Then — leave Denver at 3:30 PM on the streamliner "City of Denver" — homeward bound.

Fourteenth Day. Arrival in Chicago at 8:45 AM brings to a close a marvelous vacation, memories of which will always be a source of pleasure.

"YTZ" TOURS LEAVE CHICAGO AT 2:15 PM ON SATURDAYS AS FOLLOWS:

| | | |
|--------------------|--------------------|---------------------|
| YTZ-1 Sat. June 15 | YTZ-5 Sat. July 13 | YTZ- 9 Sat. Aug. 10 |
| YTZ-2 Sat. June 22 | YTZ-6 Sat. July 20 | YTZ-10 Sat. Aug. 17 |
| YTZ-3 Sat. June 29 | YTZ-7 Sat. July 27 | YTZ-11 Sat. Aug. 24 |
| YTZ-4 Sat. July 6 | YTZ-8 Sat. Aug. 3 | |

DETAILED SCHEDULE

(STANDARD TIME)

| | | | |
|-------------------------------|----------|----------|----------------|
| Lv. Chicago, Ill. (CST)..... | 2:15 PM | Saturday | C.M.St.P.&P. |
| Lv. Omaha, Nebr. | 11:45 PM | Saturday | Un. Pac. R. R. |
| Ar. Victor, Idaho (MST) | 7:15 AM | Monday | Un. Pac. R. R. |

MOTOR TOUR OF GRAND TETON AND YELLOWSTONE NATIONAL PARKS

| | | | |
|---|----------|-----------|----------------|
| Lv. Victor, Idaho | 8:00 AM | Monday | Motor |
| Via Teton Pass, Jackson Hole and Grand Teton National Park. | | | |
| Ar. Jackson Lake Lodge | 11:00 AM | Monday | Motor |
| Cottage rooms with private bath. | | | |
| Lv. Jackson Lake Lodge | 12:45 PM | Tuesday | Motor |
| Via Thumb, Mud Volcano and Artist Point. | | | |
| Ar. Canyon Hotel | 4:45 PM | Tuesday | Motor |
| Headquarters: Canyon Hotel. | | | |
| Lv. Canyon Hotel | 8:45 AM | Wednesday | Motor |
| Via Dunraven Pass and Tower Fall. | | | |
| Ar. Mammoth Hot Springs | 11:30 AM | Wednesday | Motor |
| Luncheon Mammoth Terrace Dining Room. | | | |
| Lv. Mammoth Hot Springs | 1:15 PM | Wednesday | Motor |
| Via Obsidian Cliff, Norris Geyser Basin and Fountain Paint Pot. | | | |
| Ar. Old Faithful Inn | 5:10 PM | Wednesday | Motor |
| Headquarters: Old Faithful Inn. | | | |
| Lv. Old Faithful Inn | 4:00 PM | Thursday | Motor |
| Via Midway Geyser Basin. | | | |
| Ar. West Yellowstone, Mont. | 5:10 PM | Thursday | Motor |
| Lv. West Yellowstone, Mont. | 7:30 PM | Thursday | Un. Pac. R. R. |
| Ar. Salt Lake City, Utah | 7:40 AM | Friday | Un. Pac. R. R. |
| Lv. Salt Lake City, Utah | 9:15 AM | Friday | Un. Pac. R. R. |
| Ar. Lund, Utah | 2:30 PM | Friday | Un. Pac. R. R. |

MOTOR TOUR OF UTAH-ARIZONA WONDERLANDS

| | | | |
|--|----------|-----------|----------------|
| Lv. Lund, Utah | 3:15 PM | Friday | Motor |
| Ar. Zion National Park | 6:45 PM | Friday | Motor |
| Sightseeing Program. Nature walks, hiking, etc. | | | |
| Lv. Zion National Park | 1:00 PM | Saturday | Motor |
| Via Mt. Carmel Highway and Kaibab National Forest. | | | |
| Ar. Grand Canyon National Park | 5:15 PM | Saturday | Motor |
| Cape Royal-Point Imperial motor trip Sunday. | | | |
| Lv. Grand Canyon National Park | 8:30 AM | Monday | Motor |
| Via Red Canyon. | | | |
| Ar. Bryce Canyon National Park | 1:30 PM | Monday | Motor |
| Rim Trip to Rainbow Point Monday. | | | |
| Lv. Bryce Canyon National Park | 3:00 PM | Tuesday | Motor |
| Lv. Cedar Breaks National Monument | 6:45 PM | Tuesday | Motor |
| Lv. Cedar City, Utah | 9:00 PM | Tuesday | Un. Pac. R. R. |
| Ar. Salt Lake City, Utah | 4:30 AM | Wednesday | Un. Pac. R. R. |
| Headquarters: Hotel Utah. Sightseeing Program. | | | |
| Lv. Salt Lake City, Utah | 5:30 PM | Wednesday | D.&R.G.W.R.R. |
| Ar. Denver, Colo. | 8:00 AM | Thursday | D.&R.G.W.R.R. |
| Sightseeing Program. | | | |
| Lv. Denver, Colo. | 3:30 PM | Thursday | Un. Pac. R. R. |
| Lv. Omaha, Nebr. (CST) | 12:40 AM | Friday | C.M.St.P.&P. |
| Ar. Chicago, Ill. (CST) | 8:45 AM | Friday | C.M.St.P.&P. |

COMPLETE COST OF "YTZ" TOUR

From and To Chicago

| | Including Rail Ticket | Plus Tax | Total Cost Each Person |
|----------------------------|--------------------------|-------------|---------------------------|
| Using Coach Seat | \$313.84 | \$18.25 | \$332.09 |
| 2 in Lower Berth | 379.44 | 24.01 | 403.45 |
| 1 in Lower Berth | 403.29 | 26.39 | 429.68 |
| 1 in Upper Berth | 391.69 | 25.23 | 416.92 |
| 2 in Bedroom | 408.09 | 26.87 | 434.96 |
| 2 in Compartment | 412.79 | 27.34 | 440.13 |
| 3 in Compartment | 393.73 | 25.34 | 419.16 |
| 2 in Drawing Room | 435.42 | 29.60 | 465.02 |
| 3 in Drawing Room | 408.81 | 26.94 | 435.75 |

TOUR FEATURES ONLY (See note below)

| Without Rail Ticket | Plus Tax |
|------------------------|-------------|
| \$229.49 | \$ 9.81 |
| 261.34 | 12.20 |
| 285.19 | 14.58 |
| 273.59 | 13.42 |
| 289.99 | 15.06 |
| 294.69 | 15.53 |
| 275.63 | 13.62 |
| 317.32 | 17.79 |
| 290.71 | 15.13 |

NOTE: Complete costs shown include rail fare from Chicago. Persons from other points of origin joining tour at Chicago, add cost of rail ticket from home city via route of tour, to the tour feature cost (without rail ticket) shown above.

TICKET ROUTE: C.M.St.P. & P. Chicago to Omaha, Un. Pac. to Victor, Ida., Un. Pac. West Yellowstone to Cedar City, Un. Pac. to Salt Lake City, D. & R.G.W. to Denver, Un. Pac. to Omaha, C.M.St.P. & P. to Chicago.

Rates for children 5 and under 12 years of age on request.

ALL MEALS INCLUDED

Amphitheatre Red Rocks Park near Denver.





Oastler's Castle, Bryce Canyon Nat'l Park, Utah.

LAS VEGAS — HOOVER DAM
GRAND CANYON — BRYCE CANYON
ZION NATIONAL PARKS — ROYAL GORGE
SALT LAKE CITY COLORADO SPRINGS DENVER
TOUR "ZLV" ALL-EXPENSE \$272.57 Plus Tax 12 DAYS

Train accommodations in coach with reclining seats

All meals are included in the cost.

SUNDAY DEPARTURES FROM CHICAGO

This tour offers a vacation combination difficult to equal for scenic thrills and variety. In addition to the Utah-Arizona Wonderlands, the tour includes Las Vegas, where two nights are spent, plus an over-night stop at Colorado Springs, with sightseeing provided at Salt Lake City and Denver as well. And so efficiently planned is it that you "do" three famous parks and visit the other attractions in less than two weeks.

DAY-BY-DAY STORY

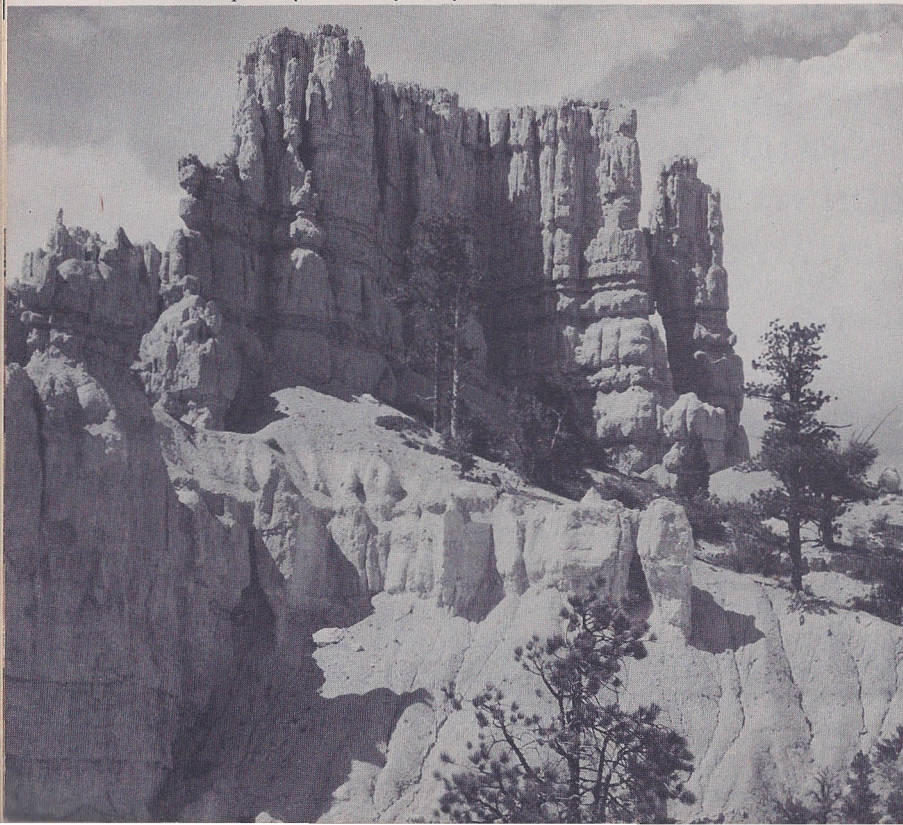
First Day. Leaving Union Station at 6:45 PM (CST) on the "City of Los Angeles" you begin twelve exciting days of vacation travel and sightseeing. Evening hours are spent getting acquainted with your fellow-travelers before getting settled for the night in your comfortable individual reclining seat.

While you sleep the train crosses western Iowa and Nebraska following the route of the covered wagons and early-day immigrants. All the while you are gaining elevation.

Second Day. Morning finds you in Cheyenne, Wyoming. Today you cross Wyoming into Utah viewing from the car window a variety of inspiring scenery en route. Salt Lake City is passed early in the evening.

Third Day. Arrival at Las Vegas, Nevada at 2:30 AM — during the height of the activities for which Las Vegas is noted. You see some of

Massive pillars of color in Bryce Canyon.



this activity on your short walk to the Hotel Fremont, in the heart of the city. Here a room with bath will be provided for the remainder of the night and for Tuesday night as well.

Sleep late if you wish. The morning and evening are free to enjoy the many attractions offered in Las Vegas.

An interesting sightseeing trip to Hoover Dam and Lake Mead is scheduled this afternoon, leaving Hotel Fremont at 12:30 PM (PST) and returning about 5:00 PM (PST).

Your meal coupons are accepted for meals at the hotel or will be redeemed by the cashier if you prefer to eat elsewhere — perhaps you'll take dinner at one of the famous hotels along the "Strip" and see a floor show.

Fourth Day. It will be necessary to arise early as departure from Las Vegas is scheduled for 6:45 AM (PST). You will walk the short distance to the station and board the train. Breakfast on the train after leaving Las Vegas, en route to Lund, Utah.

On arrival at Lund you begin your motor tour through the Land of Flaming Canyons.

The route from Lund through Cedar City to Zion National Park recalls much of the early-day Mormon settlement of the area.

You will be shown to your attractive cabin on arrival at Zion and then have dinner in the lodge center. There will be entertainment — nature talk, movies, dancing — plenty of activity for the evening.

Fifth Day. The sublimely colored peaks that form Zion Canyon will inspire you on a morning motor trip to the Temple of Sinawava and on the Ranger-guided hike to The Narrows. Leaving Zion after noon you traverse the Mt. Carmel Highway and enjoy magnificent views of Zion through the six huge tunnel "windows" — then travel through Kanab and Fredonia, across the Prismatic Plains and through beautiful Kaibab Forest — arriving at Grand Canyon at 5:15 PM.

Words cannot describe the Grand Canyon — you must see it. You will never tire of gazing into its purple depths. Tear yourself away for

35

Dining Room Zion Lodge.



Grand Canyon Dining Room where fine food is enjoyed.



dinner in the beautiful dining room in the lodge. Later in the evening, enjoy entertainment and dancing.

Sixth Day. The morning is free to do as you please. You may wish to explore the canyon afoot or on horseback. A motor trip at 2:00 PM to Cape Royal and Point Imperial will reveal many enchanting views of the Canyon.

Seventh Day. You leave Grand Canyon reluctantly at 8:30 AM to retrace your route back through the Kaibab Forest . . . through sparkling canyons . . . past Vermillion Cliffs . . . Red Canyon . . . then, Bryce Canyon, the incomparable, reached at 1:30 PM. At 3:00 PM a trip by motor from Bryce Canyon to Rainbow Point. Stops at a number of the best vantage points along the rim.

Bryce Canyon will hold you spellbound. It is a dazzling spectacle at sunset. It is like a scene from Dante's Inferno. See it again in the early morning and you will have an entirely different picture. Hike, ride . . . around the rim or into the depths . . . and you will be enchanted.

Eighth Day. Church services are available early Sunday morning. Leave Bryce Canyon at 3:00 PM and, en route to Cedar City, stop at Cedar Breaks National Monument for dinner at the lodge and to view this colorful amphitheatre.

Ninth Day. All day in beautiful, historic Salt Lake City. Breakfast and luncheon at the Hotel Utah. Sightseeing includes Saltair Beach on Great Salt Lake "where you can't sink" — the organ recital at Mormon Tabernacle — a visit to the State Capitol, the business and residential sections. Departure at 5:30 PM over the Denver & Rio Grande Western R. R.

Tenth Day. Early this morning you'll enjoy the splendor of the mountains as you cross Tennessee Pass, elevation 10,221 feet. Later you travel through spectacular Royal Gorge, the Grand Canyon of the Arkansas River, en route to Colorado Springs, reached about 1:00 PM (MST). Waiting buses take you to the top of Pikes Peak, returning late afternoon to the Antlers Hotel — your headquarters for tonight. A chuck-wagon dinner will be served in the hotel gardens.

Eleventh Day. Leave by train for Denver immediately after breakfast. Upon arrival in Denver, a sightseeing tour of Denver's principal attractions terminates at the Cosmopolitan Hotel for luncheon. Buses will transfer you to the station in time to board your train, the "City of Denver." Good meals, friendly companionship and a safe smooth ride home on this luxurious streamliner make this a fitting climax to perfect vacation days.

Twelfth Day. Arrival in Chicago at 8:45 AM (CST), after breakfast, winds up your thrilling Western vacation.

"ZLV" TOURS LEAVE CHICAGO AT 6:45 PM ON SUNDAYS AS FOLLOWS:

ZLV-1 Sun. June 16
ZLV-2 Sun. June 23
ZLV-3 Sun. June 30
ZLV-4 Sun. July 7

ZLV-5 Sun. July 14
ZLV-6 Sun. July 21
ZLV-7 Sun. July 28
ZLV-8 Sun. Aug. 4

ZLV-9 Sun. Aug. 11
ZLV-10 Sun. Aug. 18
ZLV-11 Sun. Aug. 25

DETAILED SCHEDULE

(STANDARD TIME)

| | | | |
|--|----------|-----------|----------------|
| Lv. Chicago, Ill. (CST) | 6:45 PM | Sunday | C.M.St.P.&P. |
| Lv. Omaha, Nebr. (CST) | 3:10 AM | Monday | Un. Pac. R. R. |
| Lv. Ogden, Utah (MST) | 6:55 PM | Monday | Un. Pac. R. R. |
| Ar. Las Vegas, Nevada (PST) | 2:30 AM | Tuesday | Un. Pac. R. R. |
| Headquarters: Hotel Fremont. Sightseeing tour to Hoover Dam. | | | |
| Lv. Las Vegas, Nevada (PST) | 6:45 AM | Wednesday | Un. Pac. R. R. |
| Ar. Lund, Utah (MST) | 12:45 PM | Wednesday | Un. Pac. R. R. |

MOTOR TOUR OF UTAH-AZIZONA WONDERLANDS

| | | | |
|---|-------------------|-----------|----------------|
| Lv. Lund, Utah (MST) | 1:00 PM | Wednesday | Motor |
| Lv. Cedar City, Utah | 2:30 PM | Wednesday | Motor |
| Ar. Zion National Park | 4:15 PM | Wednesday | Motor |
| Sightseeing program. Nature walks, hiking, etc. | | | |
| Lv. Zion National Park | 1:00 PM | Thursday | Motor |
| Ar. Grand Canyon National Park | 5:15 PM | Thursday | Motor |
| Cape Royal-Point Imperial side trip | Friday afternoon. | | |
| Lv. Grand Canyon National Park | 8:30 AM | Saturday | Motor |
| Ar. Bryce Canyon National Park | 1:30 PM | Saturday | Motor |
| Sightseeing trip at 3:00 PM to Rainbow Point. | | | |
| Lv. Bryce Canyon National Park | 3:00 PM | Sunday | Motor |
| Through Dixie and Powell National Forests. Dinner Cedar Breaks Lodge. | | | |
| Ar. Cedar City, Utah | 7:45 PM | Sunday | Motor |
| Lv. Cedar City, Utah | 9:00 PM | Sunday | Un. Pac. R. R. |
| Ar. Salt Lake City, Utah | 4:30 AM | Monday | Un. Pac. R. R. |
| Headquarters: Hotel Utah. Sightseeing Program. | | | |
| Lv. Salt Lake City, Utah | 5:30 PM | Monday | D.&R.G.W.R.R. |
| Ar. Colorado Springs, Colo. | 1:00 PM | Tuesday | D.&R.G.W.R.R. |
| Headquarters: Antlers Hotel. Sightseeing Program. | | | |
| Lv. Colorado Springs, Colo. | 8:11 AM | Wednesday | D.&R.G.W.R.R. |
| Ar. Denver, Colo. | 9:50 AM | Wednesday | D.&R.G.W.R.R. |
| Sightseeing Program. | | | |
| Lv. Denver Colo. | 3:30 PM | Wednesday | Un. Pac. R. R. |
| Lv. Omaha, Nebr. (CST) | 12:40 AM | Thursday | C.M.St.P.&P. |
| Ar. Chicago, Ill. (CST) | 8:45 AM | Thursday | C.M.St.P.&P. |

COMPLETE COST OF "ZLV" TOUR

From and To Chicago

In Coach,

| | | | | | |
|----------------|----------|---------|----------|----------|--------|
| Reclining Seat | \$272.57 | \$16.14 | \$288.71 | \$173.17 | \$6.20 |
|----------------|----------|---------|----------|----------|--------|

NOTE: Complete cost shown includes rail fare from Chicago. Persons from other points of origin joining tour at Chicago, add cost of rail ticket from home city via route of tour, to the tour feature cost (without rail ticket) shown above.

TICKET ROUTE: C.M.St.P. & P. Chicago to Omaha, Un. Pac. to Las Vegas (or Los Angeles if latter fare lower), Un. Pac. to Salt Lake City, D. & R.G.W. to Denver, Un. Pac. to Omaha, C.M.St.P. & P. to Chicago. Include round-trip side trips L.V.T.R. Stage Line Las Vegas to Hoover Dam and via Un. Pac. Lund to Cedar City.

Rates for children 5 and under 12 years of age on request.

ALL MEALS INCLUDED

TOUR FEATURES ONLY

(See note below)

| Without Rail Ticket | Plus Tax |
|------------------------|-------------|
|------------------------|-------------|



CALIFORNIA

On our "C" and "BC" tours you visit famous scenic spots, romantic cities, and other interesting places in California, even dipping into Old Mexico for a look at quaint Tijuana.



The stately Golden Gate Bridge.

CALIFORNIA — BARGAIN TOUR
YOSEMITE NATIONAL PARK
LOS ANGELES - SAN FRANCISCO
Hollywood - Riverside - San Diego
Tijuana, Mexico

TOUR "BC" ALL EXPENSE — \$280.22* Plus Tax 14 DAYS

**Reduced family fares apply on Monday departures.*

Train accommodations in coach with reclining seats — on Streamlined Trains

Rooms with bath at all hotels and in Yosemite.

All meals included in cost.

SATURDAY AND MONDAY DEPARTURES FROM CHICAGO

You'll never know how thoroughly yet how economically you can "do" California in two weeks until you've taken our BC Tour.

It's a real bargain — yet nothing is omitted for economy's sake.

You will travel on luxurious famous-name trains — the "City of Los Angeles" and the streamliner — "City of San Francisco", in

modern coaches with reclining seats and leg-rests — and you spend only four nights on the train round trip. The streamlined "San Joaquin Daylight" is used between Los Angeles and San Francisco.

You see the best of California — Riverside, with its world-famous Mission Inn; then motor to Los Angeles by way of San Diego, through the citrus fruit country, with visits to Tijuana, Mexico, Knott's Berry Farm and Disneyland. You'll see Los Angeles, Beverly Hills, Hollywood and the beach cities; spend two days in Yosemite National Park and two days and nights in San Francisco.

The all-expense cost includes rail fare, rooms with bath at fine hotels and lodges, sightseeing at all stopover points — and note this, *all meals are included.*

We believe the "BC" to be the most complete and, considering the features included, the lowest-priced economy tour offered to California. But — judge for yourself — read the day-by-day description.

DAY-BY-DAY STORY

First Day. Late this afternoon you will board your "magic carpet" — the "City of Los Angeles" — on your way to two weeks of exciting adventure. Your accommodations — a chair car with individual reclining seats, each equipped with a leg-rest for additional comfort.

You'll enjoy the companionship of fellow-vacationers as you speed from Chicago to California.

Second Day. Crossing Nebraska and Wyoming you parallel the route followed by the pioneers — the Mormons, gold-seekers of '49 and the Pony Express. The unobstructed views of the scenery as seen from the car window will add to the enjoyment of your trip as you cross Wyoming into Utah, reaching Salt Lake City early evening. Then on through Utah and Nevada into California during the night.

Third Day. Breakfast on the train, then Riverside and Mission Inn — termed the most unique hotel in America. Here the traditions and treasures of gracious Spanish days are skillfully blended with the tempo, comforts and requirements of modern-day living. A stay at the Inn is truly a fitting introduction to California.

Fourth Day. In the morning leave by motor coach for an interesting drive through citrus grove country, via the Ortega Highway, Sunset Cliffs, Inspiration Point and Point Loma to San Diego and your headquarters, the U. S. Grant Hotel. You stop en route at Mission San Juan Capistrano, founded in 1776 and to which the swallows return from the South each year on or about St. Joseph's Day, March 19th.

Luncheon at the hotel, then by ferry and motor to Coronado and via the Silver Strand to Tijuana, Old Mexico. Time to visit the shops and places of interest before returning to your hotel for dinner and the night.

Fifth Day. Following breakfast you leave by motor for another interesting day seeing more of Southern California before reaching Los Angeles in the evening. Your route is via Old Town, Mission Hills, La Jolla and the Coast Highway through San Clemente and Laguna Beach. A luncheon stop is made at Knott's Berry Farm.

There will be some time to visit Ghost Town — with its Gold Mine — Little Chapel — Livery Stable — General Merchandise Store and many other relics of pioneer days — before you depart at 2:00 PM for a visit to Disneyland, after which you continue to Los Angeles where you headquarter at the Biltmore Hotel — room with bath. Dinner at the hotel.

Sixth Day. You leave the hotel at 9:00 AM (PST) for an interesting sightseeing trip to Beverly Hills and the Beaches. You will view the downtown shops, MacArthur Park and the Wilshire district, pass Hollywood motion picture and radio studios, see Hollywood Boulevard, the smart "Sunset Strip"; the Beverly Hills homes of movie stars and celebrities, Westwood, BelAir Estates — Brentwood, the Pacific Ocean and millionaires' homes along the Beach at Santa Monica, from the Palisades. Return via Farmers Market where you may decide to stop and return independently to the hotel.

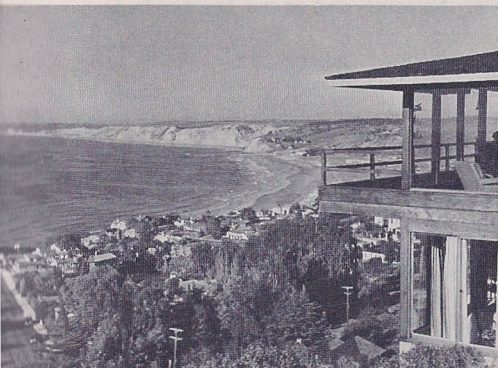
Afternoon left open for resting and shopping. Arrangements have been made for all meals to be taken at the Biltmore Hotel while in Los Angeles; however, if you want to eat elsewhere, your escort will arrange to redeem for cash the meal coupons you will hold — each has a stated value.

Seventh Day. No planned activities. You may wish to shop, visit with friends, visit some of the broadcasting studios, or take an independent sightseeing trip. All meals furnished at hotel.

Eighth Day. At 5:45 AM (PST) you are transferred to Union Station. Your train leaves at 6:25 AM — and you'll breakfast in the dining car.

Another memorable day. Comfortably seated on the San Joaquin Valley "Daylight" Streamliner, you ride over the Tehachapi Pass, glide

Pacific Ocean at La Jolla, Calif.



Typical southern California scene.





San Francisco-Oakland Bay Bridge.

through Bakersfield and Fresno, to Merced through the productive farming and fruit raising areas in the San Joaquin Valley. Arrive Merced about 2:41 PM and transfer to buses for the trip to Yosemite Valley, passing through Mariposa at the south end of the Mother Lode gold country.

MOTOR TOUR OF YOSEMITE NATIONAL PARK

Journeying via spectacular Merced Canyon, you arrive at Yosemite Valley at 6:05 PM (PST). Headquarters at Camp Curry — room with bath. Dinner is served here.

Ninth Day. All day in Yosemite Park, meals at Camp Curry. Morning church services are available for tour groups spending Sunday in Yosemite. The urge to hike around the floor of the Valley will prove



Beach at Santa Monica from Palisades.



Mission Inn, Riverside.

irresistible. Dominating the scene are El Capitan and Half Dome, stupendous rock mountains. The beauty of Yosemite Falls is fascinating as the water leaps clear of its bed to drop 2425 feet below. A motor trip at 12:00 Noon (PST) takes you to Glacier Point for magnificent views of the Valley below and its surrounding mountains. You will thrill as you watch the Firefall, a cascade of burning embers pushed over the rim at Glacier Point each night to drop 1000 feet in a sparkling column of fire.

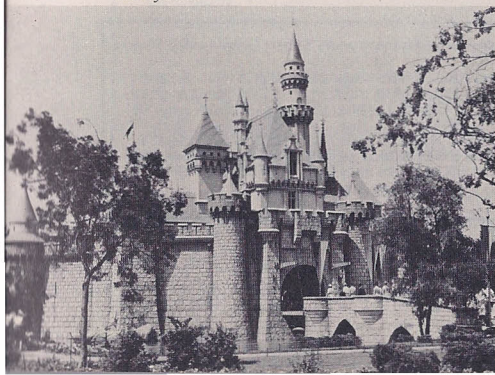
Tenth Day. Reluctantly, you'll leave Yosemite Valley at 11:45 AM (PST) after luncheon, bound for Merced. As you leave the heavily wooded foothills you pass large fig orchards and the world's largest peach orchard.

Your train, the "San Joaquin Daylight," leaves Merced at 2:41 PM (PST). Dinner will be taken in the dining car before arriving at Oakland Pier 6:45 PM (PST).

An interesting trip across San Francisco Bay by ferry steamer brings you to San Francisco at 7:30 PM (PST). You go directly to the Stewart Hotel, room with bath, your headquarters in San Francisco.

Meals can be taken at the coffee shop in the Stewart Hotel — or, if you wish to eat elsewhere, your escort will arrange to exchange your meal coupons for cash.

Disneyland.



Knott's Berry Farm.



Eleventh Day. This morning you'll board your motor bus for one of America's most interesting sightseeing trips, the "Thirty-Mile" Drive of San Francisco. This includes the Civic Center, Mission Dolores, Twin Peaks, Golden Gate and Lincoln Parks, Ocean Beach, Seal Rocks, Cliff House, the Presidio and business and residential districts. The trip will end about noon. The afternoon and evening are free to do as you please. You may wish to visit the "Top of the Mark" or one of San Francisco's noted night clubs, explore Chinatown or visit Fisherman's Wharf — and, of course, take a ride on a cable car.

Twelfth Day. The morning is free for last minute shopping and to pack your luggage. After luncheon a motor trip across the Golden Gate Bridge takes you to Muir Woods National Monument, a cathedral-like grove of magnificent redwood trees, some over 200 feet tall and about 2000 years old. The trip terminates at the Ferry Station. Then one last look at San Francisco's skyline as you cross the bay by ferry steamer and board the famous streamliner "City of San Francisco"; homeward bound. Skirting San Francisco Bay, your train passes Oakland and Berkeley en route to Sacramento, historic State capital, reached about 6:25 PM, then continues over the Sierras. At Sutter's Fort near Sacramento was found the gold that started the famous migration of 1849.

Thirteenth Day. About breakfast time you'll experience the thrill of "going to sea by rail" as your train crosses the Great Salt Lake over the famous Lucin Cut-off, arriving at Ogden about 9:20 AM. Leaving Ogden you are on the Union Pacific Railroad and through the day you'll travel across Wyoming. Your scenic menu consists of many rugged formations — the Wasatch Mountains, Weber Canyon, Echo Canyon and across the Rockies. At Creston you cross the Continental Divide. You will pass through Cheyenne, Wyoming, about 6:30 PM and soon after enter Nebraska.

Fourteenth Day. You have traveled thousands of scenic miles; you have visited strange, exciting places and you have won many new friends. Soon after breakfast you will arrive in Chicago and the end of a stimulating vacation.

"BC" TOURS LEAVE CHICAGO AT 6:45 PM ON SATURDAYS AND MONDAYS AS FOLLOWS:

| | | | |
|-------------------|--------------------|--------------------|---------------------|
| BC-1 Sat. May 25 | BC- 8 Sat. June 29 | BC-16 Sat. July 27 | BC-24 Sat. Aug. 24 |
| BC-2 Sat. June 1 | BC- 9 Mon. July 1 | BC-17 Mon. July 29 | BC-25 Mon. Aug. 26 |
| BC-3 Sat. June 8 | BC-10 Sat. July 6 | BC-18 Sat. Aug. 3 | BC-26 Sat. Aug. 31 |
| BC-4 Sat. June 15 | BC-11 Mon. July 8 | BC-19 Mon. Aug. 5 | BC-27 Sat. Sept. 7 |
| BC-5 Mon. June 17 | BC-12 Sat. July 13 | BC-20 Sat. Aug. 10 | BC-28 Sat. Sept. 14 |
| BC-6 Sat. June 22 | BC-13 Mon. July 15 | BC-21 Mon. Aug. 12 | BC-29 Sat. Sept. 28 |
| BC-7 Mon. June 24 | BC-14 Sat. July 20 | BC-22 Sat. Aug. 17 | BC-30 Sat. Oct. 12 |
| | BC-15 Mon. July 22 | BC-23 Mon. Aug. 19 | |

DETAILED SCHEDULE

(STANDARD TIME)

| | | | |
|---|----------|------------------|----------------|
| Lv. Chicago, Ill. (CST) | 6:45 PM | Saturday-Monday | C.M.St.P.&P. |
| Lv. Omaha, Nebr. (CST) | 3:10 AM | Sunday-Tuesday | Un. Pac. R. R. |
| Lv. Cheyenne, Wyo. (MST) | 9:40 AM | Sunday-Tuesday | Un. Pac. R. R. |
| Lv. Salt Lake City, Utah (MST) | 7:50 PM | Sunday-Tuesday | Un. Pac. R. R. |
| Ar. Riverside, Calif. (PST) | 8:05 PM | Monday-Wednesday | Un. Pac. R. R. |
| Headquarters: Mission Inn. Conducted tour of Inn. Monday-Wednesday | | | |
| Lv. Riverside, Calif. (PST) | 7:30 AM | Tuesday-Thursday | Motor |
| Via Ortega Highway with stop at Mission San Juan Capistrano and Point Loma. | | | |
| Ar. San Diego, Calif. (PST) | 12:45 PM | Tuesday-Thursday | Motor |
| Headquarters: U. S. Grant Hotel. Afternoon tour to Tijuana, Old Mexico, going via Silver Strand and Coronado. Return through Chula Vista and National City. | | | |
| Lv. San Diego, Calif. (PST) | 8:00 AM | Wednesday-Friday | Motor |
| Via Mission Hills, La Jolla and Coast Highway. Luncheon stop at Knott's Berry Farm. Afternoon trip to Disneyland. | | | |
| Ar. Los Angeles, Calif. (PST) | 4:30 PM | Wednesday-Friday | Motor |
| Headquarters: Biltmore Hotel. Thursday-Saturday morning - Beverly Hills Beach Tour. Afternoon and evening open. | | | |
| Friday-Sunday: Day of rest - no planned activities. | | | |
| Lv. Los Angeles, Calif. (PST) | 6:25 AM | Saturday-Monday | So. Pac. Lines |
| Ar. Merced, Calif. (PST) | 2:41 PM | Saturday-Monday | So. Pac. Lines |

MOTOR TOUR OF YOSEMITE NATIONAL PARK

| | | | |
|---|----------|-------------------|----------------|
| Lv. Merced, Calif. (PST) | 3:11 PM | Saturday-Monday | Motor |
| Ar. Yosemite Valley, Calif. (PST) | 6:05 PM | Saturday-Monday | Motor |
| Headquarters: Camp Curry. Sightseeing Program. Hiking, attend church, etc. | | | |
| Lv. Yosemite Valley, Calif. (PST) | 11:45 AM | Monday-Wednesday | Motor |
| Lv. Merced, Calif. (PST) | 2:47 PM | Monday-Wednesday | So. Pac. Lines |
| Ar. Oakland Pier, Calif. (PST) | 6:45 PM | Monday-Wednesday | So. Pac. Lines |
| Ar. San Francisco, Calif. (PST) | 7:30 PM | Monday-Wednesday | So. Pac. Ferry |
| Headquarters: Hotel Stewart. Rooms with bath. | | | |
| Tuesday-Thursday: "Thirty-mile Drive" City Tour De luxe 8:00 AM (PST). | | | |
| Wednesday-Friday: Trip to Muir Woods, Giant Redwood Trees and Marin County. | | | |
| Lv. San Francisco, Calif. (PST) | 4:00 PM | Wednesday-Friday | So. Pac. Ferry |
| Lv. Ogden, Utah (MST) | 9:40 AM | Thursday-Saturday | Un. Pac. R. R. |
| Ar. Omaha, Nebr. (CST) | 2:50 AM | Friday-Sunday | Un. Pac. R. R. |
| Ar. Chicago, Ill. (CST) | 11:15 AM | Friday-Sunday | C.M.St.P.&P. |

COMPLETE COST OF "BC" TOUR

From and To Chicago

In Coach,

| | | | | | |
|----------------------|----------|---------|----------|----------|--------|
| Reclining Seat | \$280.22 | \$15.59 | \$295.81 | \$180.82 | \$5.65 |
|----------------------|----------|---------|----------|----------|--------|

NOTE: Complete cost shown includes rail fare from Chicago. Persons from other points of origin joining tour at Chicago, add cost of rail ticket from home city via route of tour, to the tour feature cost (without rail ticket) shown above.

TICKET ROUTE: C.M.St.P. & P. Chicago to Omaha, Un. Pac. to Los Angeles, So. Pac. to Ogden, Un. Pac. to Omaha, C.M.St.P. & P. to Chicago.

Rates for children 5 and under 12 years of age on request.

Reduced family fares apply on BC tours leaving Chicago on Mondays. Consult your Agent or write regarding savings that might be effected.

ALL MEALS INCLUDED

TOUR FEATURES ONLY

(See note below)

| | |
|-------------|------|
| Without | Plus |
| Rail Ticket | Tax |

UTAH-ARIZONA WONDERLANDS-CALIFORNIA ECONOMY TOUR

Grand Canyon - Zion - Bryce Canyon -
Yosemite National Parks — Disneyland
Los Angeles - Hollywood - San Francisco
Riverside - San Diego - Tijuana, Mexico

TOUR Z-BC COACH SEAT ACCOMMODATIONS ONLY 21 DAYS

ALL EXPENSE — \$403.47 Plus \$20.36 TAX

*All Meals Are Included in the Cost.**

LEAVE CHICAGO SATURDAYS — JUNE 15 THROUGH AUGUST 24

If you have three weeks time — a desire to see California and the West's most colorful scenic regions — and if economy is a factor, this is the tour for you. Truly comprehensive, yet low in cost.

Four National Parks, two National Monuments and 9 days "doing" California are included in this combination of portions of our "Z" tour described on pages 19 to 25 and the "BC" tour on pages 39 to 45.

Traveling in comfortable coach reclining seat you leave Chicago on Saturday with the "Z" group visiting Zion, Grand Canyon and Bryce Canyon National Parks, Cedar Breaks National Monument and the Kaibab Forest — seven days and six nights in the Southern Utah-Arizona Wonderlands.

Leaving the "Z" tour on Sunday, the ninth day, you travel independently from Cedar City, Utah to Riverside, California — and join the "BC" tour at Mission Inn on Monday afternoon.

Now follows a two-day motor tour to San Diego and Tijuana, Mexico, Knott's Berry Farm and Disneyland, then three nights and two days seeing Los Angeles, Hollywood, Beverly Hills; two nights in Yosemite National Park, and two nights and days in San Francisco with a visit to Muir Woods National Monument.

You return home from San Francisco on the streamliner "City of San Francisco," arriving in Chicago on the 21st day.

*All meals included except while traveling independently — Cedar City to time of joining "BC" tour at Riverside.

COMPLETE COST OF Z-BC COMBINATION TOUR

| From and To Chicago | Including Rail Ticket | Plus Tax | Total Cost Each Person | TOUR FEATURES ONLY (See note below) | |
|--------------------------|--------------------------|-------------|---------------------------|--|-------------|
| | | | | Without Rail Ticket | Plus Tax |
| In Coach, | | | | | |
| Reclining Seat | \$403.47 | \$20.36 | \$423.83 | \$304.07 | \$10.42 |

NOTE: Complete cost shown includes rail fare from Chicago. Persons from other points of origin joining tour at Chicago, add cost of rail ticket from home city via route of tour, to the tour feature cost (without rail ticket) shown above.

TICKET ROUTE: C.M.St.P. & P. Chicago to Omaha, Un. Pac. to Los Angeles, So. Pac. to Ogden, Un. Pac. to Omaha, C.M.St.P. & P. to Chicago. Include round-trip side trip Un. Pac. Lund to Cedar City.

Rates for children 5 and under 12 years of age on request.

ALL MEALS INCLUDED



Yosemite Valley.

**CALIFORNIA (De Luxe) TOUR
YOSEMITE NATIONAL PARK
LOS ANGELES - SAN FRANCISCO**

Riverside - San Diego - Hollywood

Tijuana, Mexico - Disneyland

Las Vegas, Nevada - Hoover Dam

TOUR "C" PULLMAN ACCOMMODATIONS ONLY 14 DAYS

ALL EXPENSE — LOW AS \$402.75 Plus Tax

All Meals Are Included in the Cost.

SATURDAY DEPARTURES FROM CHICAGO.

"CALIFORNIA!" — there's magic in the name. It fires the imagination and quickens one's desires to go and see the attractions it offers.

Happily, our "C" tour provides the perfect formula for a completely satisfying vacation — one that enables you to "do" the Golden State within a two-week period. You will visit Los Angeles, San Francisco, Hollywood, Riverside, San Diego, Disneyland, Yosemite National Park. In addition, there's a trip across the border to Tijuana, Mexico, and a day in Las Vegas, Nevada, with a visit to Hoover Dam.

On our "C" Tour only the best hotels are used, sightseeing trips are the finest, and all arrangements are made in advance. All you do is enjoy yourself. What's more, the first cost is the entire cost — there are no extras except tips you may wish to give. All meals are included.

So . . . if you really want to see California in a thorough and leisurely manner — at a reasonable cost — join our "C" Tour. It's the perfect formula for a *truly* carefree vacation.

DAY-BY-DAY STORY

First Day. In mid-afternoon you leave Chicago on what is sure to be a memorable vacation. Your first hours will be spent in getting acquainted with congenial traveling companions as your train travels westward across Illinois and Iowa.

Second Day. Early morning finds you in western Nebraska and later at Cheyenne, Wyoming, capital of the state. Your route across Wyoming into Utah parallels that followed by the Argonauts of '49, the Mormons and other pioneers, as they trekked laboriously across mountains and plains in search of happiness and fortune. Salt Lake City is passed late in the evening.

Third Day. You reach Las Vegas, Nevada, about 7:05 AM where you are transferred to the magnificent Riviera Hotel for breakfast, and your headquarters tonight. After breakfast you'll board motor buses for a trip to Boulder City — built to house the men who constructed Boulder Dam (now Hoover Dam). A short stop is made here; then you're off to the Dam itself where Government guides conduct your party through the huge power-houses inside, and give informative talks about points of interest.

Luncheon is taken at Lake Mead Lodge, after which the party returns to Las Vegas and to the Riviera Hotel for dinner and floor show. Time for a swim in the pool before dinner.

Fourth Day. Leaving the hotel at 6:30 AM you connect with Union Pacific's 7:20 AM train — California-bound. Breakfast and luncheon in the dining car. Shortly after noon you arrive at Riverside — and transfer to beautiful Mission Inn where rooms with bath are provided.

During your stay you will be taken on a tour of the Inn, with an opportunity to inspect its galleries; its historic relics; its fine Spanish architecture. Every nook and cranny of the Inn presents some fascinating bit of lore or legend, antiques or masterpieces that will delight you hours on end. Bring your bathing suits and enjoy a dip in the pool. Mission Inn is famous the world over.

Fifth Day. Breakfast and luncheon at the Inn, then off on an exciting motor tour to the South . . . through enchanting stretches of citrus groves and vineyards . . . then west over the hairpin curves of

the Ortego Highway, up the east slope of the Santa Ana Mountains to James Point for a panoramic view of the Elsinore Valley, two thousand feet below . . . through San Juan Capistrano for a visit to the mission founded by Father Junipero Serra in 1776 . . . and then on past Sunset Cliffs, Inspiration Point and Point Loma to San Diego itself and your headquarters at the U. S. Grant Hotel.

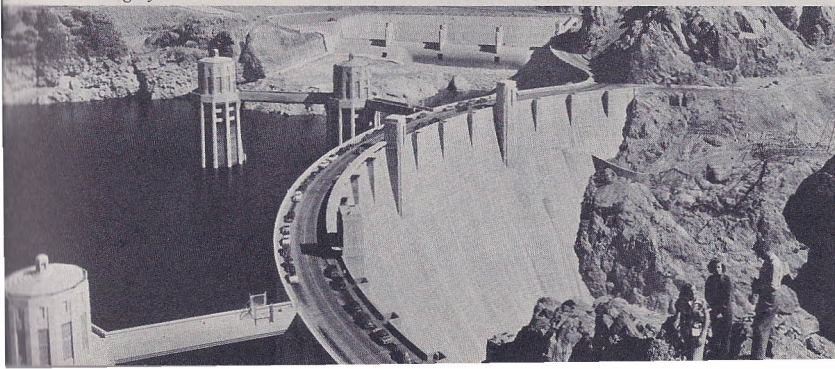
Time to "freshen-up" then to the Harbor House, directly on the shore of San Diego Bay, for dinner. Buses will then take you on an evening tour of Tijuana, Old Mexico across the International Border, going via Coronado and the Silver Strand, with a short stop at Hotel Del Coronado. After visiting the quaint shops and other attractions, you return to San Diego through Chula Vista and National City.

Sixth Day. At 8:00 AM motor buses will leave the hotel for another interesting scenic ride north via Mission Hills and La Jolla, noted for its beautiful homes overlooking the Pacific Ocean, then up the Coast Highway, through San Clemente and Laguna Beach. A stop is made at Knott's Berry Farm for a delicious luncheon, with time to visit its Ghost Town — followed by a visit to Disneyland.

Next — Los Angeles and the Biltmore Hotel where rooms with bath are awaiting your party. At 7:00 PM (PST) you leave the hotel, from the Grand Avenue entrance, for a 7:30 PM dinner at the Moulin Rouge, famous theatre restaurant, noted for fine food and the excellence of its entertainment. Orchestra music for dancing between shows. This will be one of the high-lights of your trip.

Seventh Day. Breakfast at the hotel. Leave at 8:00 AM (PST) by motor for a very interesting tour which includes a view of the downtown shops, MacArthur Park, Wilshire District, Windsor Square, Hollywood Motion Picture and Radio Studios, Hollywood Boulevard, the smart "Sunset Strip," Beverly Hills homes of the movie stars and celebrities. Westwood, site of the University of California at Los Angeles, Bel-Air Estates, the Riviera, Brentwood, the Pacific Ocean and

Mighty Hoover Dam harnesses the Colorado River.



the beach at Santa Monica from the Palisades. Luncheon will be taken at the Hotel Miramar in Santa Monica.

Anyone desiring to visit the Farmers' Market or one of the radio or television studios may leave the buses at these points on the return trip and return to the Biltmore independently.

Coupons are provided for meals scheduled at the Biltmore. Your escort will arrange to exchange these for cash if you wish to eat elsewhere.

Eighth Day. Morning tour of beautiful Forest Lawn Memorial Park. The party will leave the hotel at 5:45 PM (PST) for the station to connect with the evening train for Fresno. An early dinner is suggested before departure since only sandwiches and light snacks are served on the train leaving Los Angeles.

Ninth Day. Sleepers may be occupied until 6:30 AM (PST), when motor buses will transfer you to Hotel Californian for breakfast. Immediately after breakfast you leave by motor for tour of Yosemite National Park. Those who wish to may attend early church services in Fresno.

MOTOR TOUR OF YOSEMITE NATIONAL PARK

Your route is through oak-forested foothills up the western slope of the Sierra Nevada Mountains to Mariposa Grove of Big Trees. Here you get your first view of the "Sequoia Gigantea", the earth's oldest and largest living things, some thirty feet thick, nearly three hundred

An impressive stand of big trees.



feet high and with an estimated age of more than 3,800 years. After luncheon at Big Trees Lodge you ride in the shadows of the towering granite peaks of the valley en route to The Ahwahnee Hotel, your headquarters, reached at 2:30 PM (PST).

En route you will see the many natural wonders of Yosemite . . . huge granite domes . . . feathery waterfalls and mighty cataracts. There's Half Dome, which for eons of time has looked down upon the Valley . . . Bridalveil Fall with its delicate spray . . . Yosemite Falls, the highest in the world, with a drop of 2,425 feet . . . El Capitan, rising a sheer 3,000 feet from the Merced River and eternally guarding the west entrance of the valley. Spend the balance of the day enjoying these marvels of nature.

This evening you will see the unique Firefall pour over the precipice at Glacier Point. Truly a day of surprises.

Tenth Day. This morning you may wish to stroll to the Park Headquarters, visit the Park Museum to hear an illustrated lecture on the formation of the Valley, or accompany a Park Ranger-Naturalist on a hike. Others may just wish to lounge on the veranda of The Ahwahnee and enjoy the beauty all around them.

Leaving Yosemite Valley at 3:45 PM (PST) you motor through the Wawona Tunnel onward and upward to Glacier Point, 3,254 feet above the Valley, presenting a breath-taking panorama of High Sierra peaks and a bird's-eye view of the Valley. After dinner your party takes a last, farewell look at Yosemite and leaves at 7:30 PM (PST) for the return trip to Fresno where your sleeping cars will be waiting.

Eleventh Day. Your eventful day starts early because you leave your train at Berkeley at 6:53 AM (PST) where motor buses will be waiting to take you by way of the University of California campus to lovely Hotel Claremont, situated in the Berkeley Hills, overlooking the East Bay cities of Berkeley and Oakland. To the west can be seen San Francisco Bay and, if it's a clear day, the Golden Gate and San Francisco-Oakland Bay Bridges and the skyline of San Francisco.

After breakfast you'll start on an outstanding scenic drive. First — across the San Francisco-Oakland Bay Bridge to San Francisco — continuing on a thirty mile trip of the city. Included are a stop at Mission Dolores, Twin Peaks, Golden Gate Park and the world renowned Cliff House, overlooking Seal Rocks and the Pacific, where you have luncheon. Returning you see Lincoln Park — the beautiful Sea Cliff and Marina residential districts and the Presidio, en route to your headquarters, the beautiful Fairmont Hotel, atop Nob Hill.

All meals in San Francisco are included in your tour cost. However, so that you will be free to eat at any or several of San Francisco's noted eating places, your escort will redeem in cash the meal coupon provided. He will tell you, too, about the better restaurants.

The afternoon and evening are open to "do as you please." You will want to explore Chinatown, or visit the "Top of the Mark" or some noted night club.

Twelfth Day. Because there are so many things to do and see in San Francisco, nothing is planned for today. You'll want to visit some of the many unusual shops and stores; perhaps revisit places passed yesterday or arrange to lunch in Chinatown or at Fisherman's Wharf.

At 3:20 PM (PST) you transfer from the hotel to the Ferry Station.

Crossing the bay by ferry steamer to your awaiting train — the "City of San Francisco" — at Oakland Pier, you experience the only available means of transportation across the bay prior to completion of the towering San Francisco-Oakland Bay Bridge under which you pass.

Thirteenth Day. Early this morning you will experience the rare sensation of "going to sea by rail" — crossing Great Salt Lake.

Later you cross Wyoming, retracing a portion of your westbound trip. There will be leisurely meals in the dining car and pleasant hours in the lounge as your train speeds eastward.

Fourteenth Day. After an enjoyable breakfast in the dining car, the last leg of the journey is completed and you are back in Chicago where this memorable tour started. There will be promises to correspond as the members of your party prepare to go their several ways.

"C" TOURS LEAVE CHICAGO AT 2:15 PM ON SATURDAYS AS FOLLOWS:

C-1 Sat. June 15
C-2 Sat. June 22
C-3 Sat. June 29
C-4 Sat. July 6

C-5 Sat. July 13
C-6 Sat. July 20
C-7 Sat. July 27
C-8 Sat. Aug. 3

C-9 Sat. Aug. 10
C-10 Sat. Aug. 17
C-11 Sat. Aug. 24

Colorful Fisherman's Wharf and Coit Tower.



DETAILED SCHEDULE

(STANDARD TIME)

| | | | |
|--|----------|-----------|----------------|
| Lv. Chicago, Ill. (CST) | 2:15 PM | Saturday | C.M.St.P.&P. |
| Lv. Omaha, Nebr. (CST) | 11:45 PM | Saturday | Un. Pac. R. R. |
| Lv. Ogden, Utah (MST) | 8:50 PM | Sunday | Un. Pac. R. R. |
| Lv. Salt Lake City, Utah (MST) | 10:30 PM | Sunday | Un. Pac. R. R. |
| Ar. Las Vegas, Nevada (PST) | 7:05 AM | Monday | Un. Pac. R. R. |
| Headquarters: Riviera Hotel. Side trip to Hoover Dam. | | | |
| Lv. Las Vegas, Nevada (PST) | 7:20 AM | Tuesday | Un. Pac. R. R. |
| Ar. Riverside, Calif. (PST) | 1:35 PM | Tuesday | Un. Pac. R. R. |
| Headquarters: Mission Inn. Conducted tour of Inn. | | | |
| Lv. Riverside, Calif. (PST) | 11:45 AM | Wednesday | Motor |
| Ar. San Diego, Calif. (PST) | 5:00 PM | Wednesday | Motor |
| Headquarters: U. S. Grant Hotel. Dinner at Harbor House. Evening trip to Tijuana, Mexico via Coronado and the Silver Strand, returning thru Chula Vista and National City. | | | |
| Lv. San Diego, Calif. (PST) | 8:00 AM | Thursday | Motor |
| Via Mission Hills, La Jolla and Coast Highway. Luncheon — Knott's Berry Farm. After luncheon, trip to Disneyland. | | | |
| Ar. Los Angeles, Calif. (PST) | 4:30 PM | Thursday | Motor |
| Headquarters: Biltmore Hotel. Dinner, Moulin Rouge. | | | |
| Friday: Beverly Hills — Beach Tour. Luncheon at Miramar Hotel, Santa Monica. | | | |
| Saturday: Morning tour of Forest Lawn Memorial Park. Afternoon free. | | | |
| Lv. Los Angeles, Calif. (PST) | 6:35 PM | Saturday | So. Pac. Lines |
| Ar. Fresno, Calif. (PST) | 2:52 AM | Sunday | So. Pac. Lines |

MOTOR TOUR OF YOSEMITE NATIONAL PARK

| | | | |
|--|----------|-----------|----------------|
| Lv. Fresno, Calif. (PST) | 8:00 AM | Sunday | Motor |
| Via Mariposa Grove, with stop for luncheon at Big Trees Lodge. | | | |
| Ar. Yosemite Valley (PST) | 2:30 PM | Sunday | Motor |
| Headquarters: Ahwahnee Hotel. Nature walks-hiking, etc. | | | |
| Lv. Yosemite Valley (PST) | 3:45 PM | Monday | Motor |
| Via Glacier Point. Dinner at Glacier Point Hotel. | | | |
| Ar. Fresno, Calif. (PST) | 10:00 PM | Monday | Motor |
| Ar. Berkeley, Calif. (PST) | 6:53 AM | Tuesday | So. Pac. Lines |
| Breakfast at Hotel Claremont, then motor across San Francisco-Oakland Bay Bridge to San Francisco "Thirty Mile Drive" City Tour De luxe with stop at Cliff House for luncheon. | | | |
| Headquarters: Fairmont Hotel. | | | |
| Lv. San Francisco, Calif. (PST) | 4:00 PM | Wednesday | So. Pac. Ferry |
| Lv. Oakland Pier, Calif. (PST) | 4:33 PM | Wednesday | So. Pac. Lines |
| Lv. Ogden, Utah (MST) | 9:40 AM | Thursday | Un. Pac. R. R. |
| Ar. Omaha, Nebr. (CST) | 2:50 AM | Friday | Un. Pac. R. R. |
| Ar. Chicago, Ill. (CST) | 11:15 AM | Friday | C.M.St.P.&P. |

COMPLETE COST OF "C" TOUR

From and To Chicago

| | Including Rail Ticket | Plus Tax | Total Cost Each Person |
|-------------------|--------------------------|-------------|---------------------------|
| 2 in Lower Berth | \$402.75 | \$24.65 | \$427.40 |
| 1 in Lower Berth | 428.37 | 27.22 | 455.59 |
| 1 in Upper Berth | 416.07 | 25.99 | 442.06 |
| 2 in Bedroom | 433.37 | 27.72 | 461.09 |
| 2 in Compartment | 439.92 | 28.37 | 468.29 |
| 3 in Compartment | 418.09 | 26.19 | 444.28 |
| 2 in Drawing Room | 464.22 | 30.80 | 495.02 |
| 3 in Drawing Room | 434.29 | 27.81 | 462.10 |

TOUR FEATURES ONLY (See note below)

| Without Rail Ticket | Plus Tax |
|------------------------|-------------|
| \$263.30 | \$10.70 |
| 288.92 | 13.27 |
| 276.62 | 12.04 |
| 293.92 | 13.77 |
| 300.47 | 14.42 |
| 278.64 | 12.24 |
| 324.77 | 16.85 |
| 294.84 | 13.86 |

NOTE: Complete costs shown include rail fare from Chicago. Persons from other points of origin joining tour at Chicago, add cost of rail ticket from home city via route of tour, to the tour feature cost (without rail ticket) shown above.

TICKET ROUTE: C.M.St.P. & P. Chicago to Omaha, Un. Pac. to Los Angeles, So. Pac. to Ogden, Un. Pac. to Omaha, C.M.St.P. & P. to Chicago. Include round-trip side trip ticket L.V.T.R. Stage Line Las Vegas to Hoover Dam.

Rates for children 5 and under 12 years of age on request.

ALL MEALS INCLUDED

UTAH-ARIZONA WONDERLANDS—CALIFORNIA DE LUXE TOUR

Grand Canyon - Zion - Bryce Canyon -
Yosemite National Parks - Las Vegas - Hoover Dam
San Diego - Los Angeles - San Francisco
Riverside - Tijuana, Mexico - Disneyland

TOUR Z-C PULLMAN ACCOMMODATIONS ONLY 21 DAYS

ALL EXPENSE — LOW AS \$529.30 Plus Tax

All Meals Are Included in the Cost.

LEAVE CHICAGO SATURDAYS JUNE 15 THROUGH AUGUST 17

Here is a de luxe three weeks vacation adventure you will always remember with pleasure.

It's a combination of the principal features of two of our finest tours — the "Z" and the "C" — described on pages 19 and 47.

You follow the itinerary of the "Z" tour for the first nine days and on the tenth day join the "C" tour at Las Vegas, Nevada for the remainder of the trip to Chicago.

Seven days are spent seeing Zion-Bryce Canyon and Grand Canyon National Parks while on the "Z" tour. On the "C" portion of the trip you have a day each in Las Vegas and at Riverside's Mission Inn, motor through Southern California to San Diego, visit Tijuana, Mexico, Knott's Berry Farm and Disneyland, spend two days in Los Angeles, two in Yosemite National Park and finally one and a half days in San Francisco.

COMPLETE COST OF Z-C COMBINATION TOUR

From and To Chicago

| | Including Rail Ticket | Plus Tax | Total Cost Each Person | TOUR FEATURES ONLY (See note below) | |
|-----------------------------|--------------------------|-------------|---------------------------|--|-------------|
| | | | | Without Rail Ticket | Plus Tax |
| 2 in Lower Berth | \$529.30 | \$29.67 | \$558.97 | \$389.85 | \$15.72 |
| 1 in Lower Berth | 557.47 | 32.49 | 589.96 | 418.02 | 18.54 |
| 1 in Upper Berth | 543.87 | 31.13 | 575.00 | 404.42 | 17.18 |
| 2 in Bedroom | 562.95 | 33.03 | 595.98 | 423.50 | 19.08 |
| 2 in Compartment | 570.02 | 33.74 | 603.76 | 430.57 | 19.79 |
| 3 in Compartment | 546.15 | 31.36 | 577.51 | 406.70 | 17.41 |
| 2 in Drawing Room | 596.73 | 36.41 | 633.14 | 457.28 | 22.46 |
| 3 in Drawing Room | 563.96 | 33.14 | 597.10 | 424.51 | 19.19 |

NOTE: Complete costs shown include rail fare from Chicago. Persons from other points of origin joining tour at Chicago, add cost of rail ticket from home city via route of tour, to the tour feature cost (without rail ticket) shown above.

TICKET ROUTE: C.M.St.P. & P. Chicago to Omaha, Un. Pac. to Los Angeles, So. Pac. to Ogden, Un. Pac. to Omaha, C.M.St.P. & P. to Chicago. Include round-trip side trips via Un. Pac. Lund to Cedar City and L.V.T.R. Stage Line Las Vegas to Hoover Dam.

Rates for children 5 and under 12 years of age on request.

ALL MEALS INCLUDED



Lake Louise from Chateau.

**PACIFIC NORTHWEST - CANADIAN ROCKIES
MT. RAINIER, YOHO AND BANFF
NATIONAL PARKS
PORTLAND - BREMERTON - SEATTLE
VICTORIA - LAKE LOUISE - BANFF
TOUR "PNW" PULLMAN ACCOMMODATIONS ONLY 14 DAYS**

ALL EXPENSE — LOW AS \$405.89 Plus Tax

All Meals Are Included in the Cost.

SATURDAY AND THURSDAY DEPARTURES FROM CHICAGO

**Reduced family fares apply on Thursday departures.*

What an outing this is! Everyone owes it to himself to visit the vast Evergreen Empire of the Pacific Northwest. Why not see it this summer on a PNW Tour?

You travel on the Domeliner, "City of Portland" to Portland, Oregon, for a day and a night, and motor through beautiful Columbia River Gorge with stops at Multnomah Falls and Bonneville Dam.

Then two nights in Mt. Rainier National Park — tour the Puget Sound Naval Shipyard at Bremerton, spend a night in Seattle; steamship trip to Victoria, B. C., staying at the Empress Hotel with a visit to the famous Butchart's Gardens.

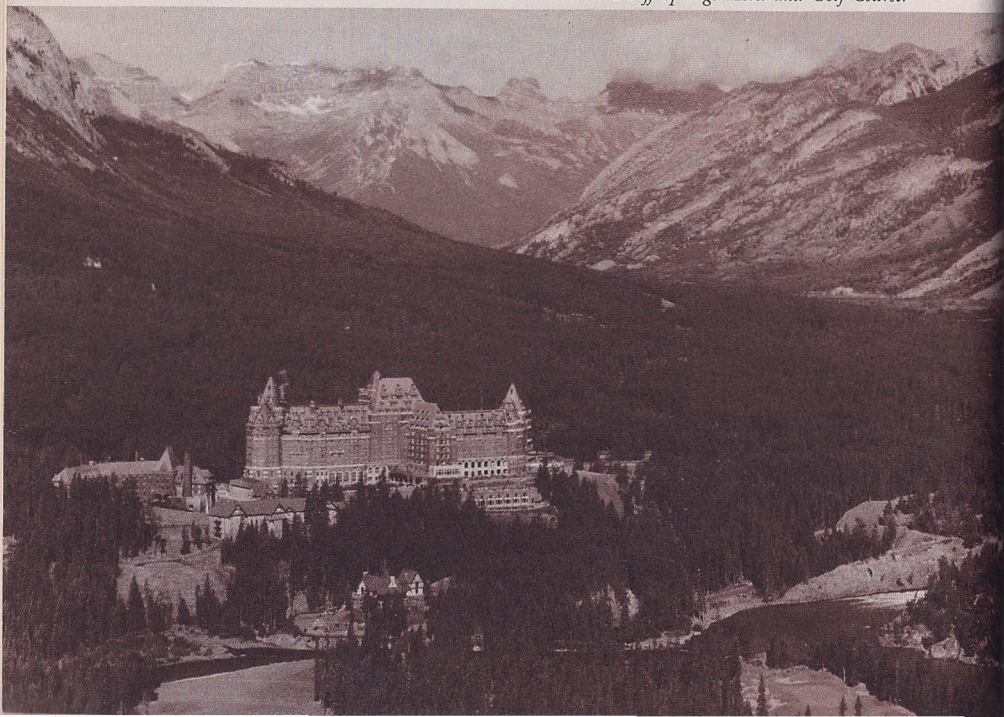
Travel by steamer to Vancouver, followed by such scenic treats as the trip by train to Field; then motor to Emerald Lake and Yoho Valley — spend three days in the Canadian Rockies dividing your time between beautiful Lake Louise and picturesque Banff.

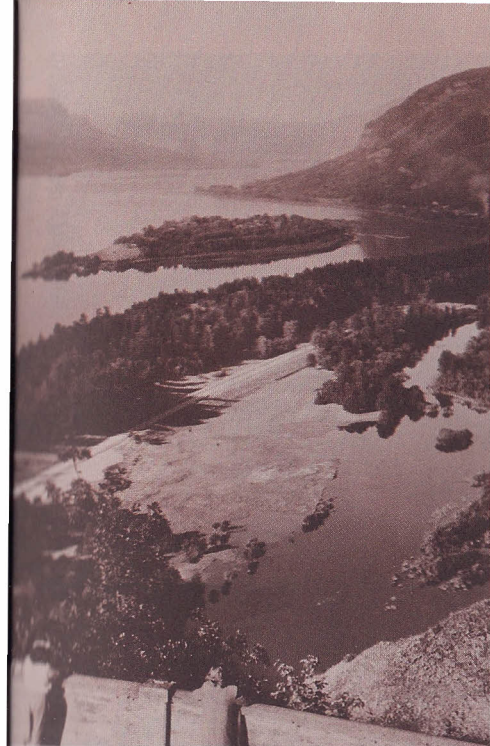
Return home by way of Minneapolis and St. Paul and "The Morning Hiawatha" streamliner. Truly, a rich vacation investment.

DAY-BY-DAY STORY

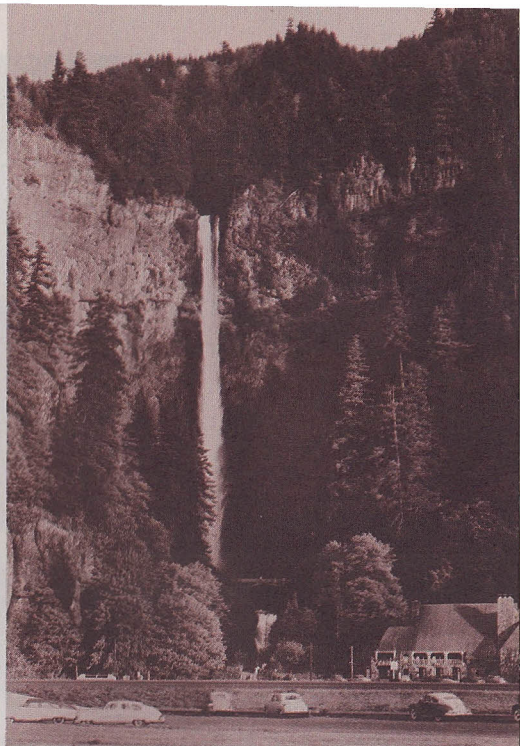
First Day. The evening hours pass pleasantly as you become acquainted with your companions of the next two weeks, and your train, the Domeliner, "City of Portland," crosses Illinois and Iowa.

Second Day. During the night you crossed Nebraska. Today, as you follow the route of the Overland and Oregon Trails across the states of Wyoming and Idaho en route to Portland, Oregon, you will enjoy delicious meals in the Dome Dining Car and the unobstructed views from the Dome Observation Lounge car.





Columbia River Gorge from Crown Point.

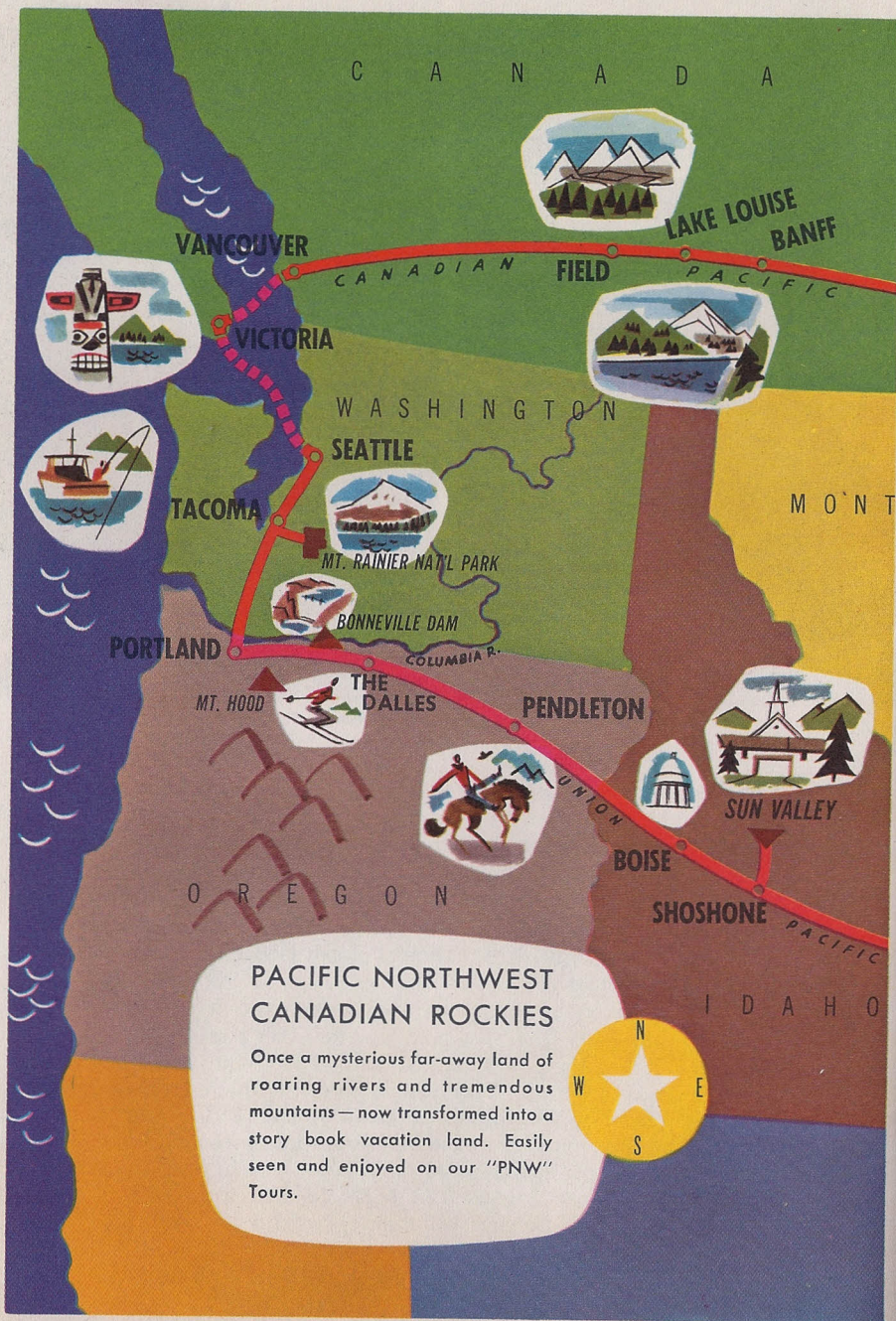


Multnomah Falls, Columbia River Gorge.

Third Day. After breakfast in the dining car, you reach Portland and transfer to the Hotel Benson where rooms with bath are provided. At 9:30 AM, leave by motor for an interesting drive along the Columbia Highway through the beautiful Columbia River Gorge, visiting the Sanctuary of our Sorrowful Mother, Crown Point and other points of interest en route to Multnomah Falls for luncheon. Later, an inspection trip of Bonneville Dam, its fish hatchery and fish ladder. Then, on to Cascade Locks and across the mighty Columbia over the "Bridge of the Gods", returning over the Evergreen Highway on the Washington side. Dinner at the hotel. The evening is free for other pursuits.

Fourth Day. Leave the hotel at 8:00 AM (PST), transfer to the station for the run to Tacoma. Following a short but interesting train ride, you reach Tacoma, Washington about 12:01 PM (PST). Waiting taxi cabs will transfer you to the Hotel Olympus for luncheon.

After luncheon, you board comfortable motor coaches for an inspiring mountain drive to Paradise Inn in Mt. Rainier National Park. This picturesque Inn will be your home for two nights and a day.



PACIFIC NORTHWEST CANADIAN ROCKIES

Once a mysterious far-away land of roaring rivers and tremendous mountains—now transformed into a story book vacation land. Easily seen and enjoyed on our "PNW" Tours.

There will be evening entertainment with picture information to help you decide how to make the most of your time.

Fifth Day. Saddle and foot guide trips through wild flower fields for the more scenic vantage points are available or the Ranger-Naturalists will take you on an exploratory walk to the rim of the Glaciers. You will gaze upon the wonders of this amazing National Park — perpetually snow-capped peaks and distant mountain ranges — tumbling waterfalls — knee-deep flower covered mountain meadows — mighty moving glaciers — mirrored lakes. All are a part of this Mountain-Glacier-Wonderland, and you will never forget the grandeur of the "Mountain that was God" towering 14,800 feet high at your very finger tips.

Sixth Day. After breakfast you leave Paradise Inn for Tacoma and Bremerton, reached in time for luncheon at the Elks Club. Then, following luncheon, you begin an interesting sightseeing trip of the Puget Sound Naval Shipyard. Scores of vessels may be seen ranging from the tiny destroyers to cruisers, big battlewagons, and flat tops in various stages of repair, or in "moth balls." The climax of this tour is a visit aboard the USS Missouri on the deck of which the surrender of Japan was signed in Tokyo Bay, September 2, 1945.

Leave by ferry at 3:20 PM for Seattle and the Olympic Hotel for dinner and lodging that night. Evening free.

Seventh Day. About 7:00 AM (PST) you will be transferred from



the hotel to the Canadian Pacific Steamship dock, where you will board the steamer for the trip to Victoria, B. C. Breakfast on the ship. At Victoria the beautiful Empress Hotel will be your headquarters. It is important that proper credentials proving U. S. Citizenship be carried to comply with immigration regulations. See "General Information" for details.

Mid-afternoon, a comprehensive scenic drive of this typically English city visiting the Parliament Buildings, business section and residential districts, with a stop at Mrs. Butchart's Gardens, 16-acre wonderland of flowers and formal gardens. Dinner at the Empress Hotel. The evening is free to do as you please.

Eighth Day. No planned activities during the morning. After luncheon you leave Victoria by steamer for Vancouver, B. C., where you will board the Canadian Pacific train for the run to Field, B. C.

Ninth Day to Twelfth Day. Morning finds you in the midst of the Canadian Rockies — with thrilling sights as the ever-changing panorama unfolds. Luncheon in the diner before reaching Field.

A drive of rare scenic beauty will take you into two National Parks. First to beautiful Emerald Lake situated in a forest beneath towering Mt. Burgess in Yoho National Park. Then to Takakkaw Falls in Yoho Valley, continuing through Kicking Horse Canyon, past Wapta Lake and across the Great Divide into Banff National Park, oldest and second largest of Canada's National playgrounds, arriving at beautiful Chateau Lake Louise at 4:30 PM.

Lake Louise, situated at the base of Victoria Glacier, is a bit of turquoise loveliness surrounded by noble mountains. An impressive scenic drive to Lake Peyto is scheduled from Chateau Lake Louise the afternoon of the 10th Day.

Motoring from Lake Louise to Banff through Johnson Canyon you pass towering Mt. Eisenhower. Banff Springs Hotel is ideally situated for viewing the picturesque Bow River Valley and breath-taking mountain panoramas. A drive at Banff to Mount Norquay covers many places of interest in that area and is scheduled the morning of the 12th Day. You may ride a ski-lift on Mt. Norquay if you wish.

All "PNW" tours spend three days and nights in the Canadian Rockies. The order of activities shown above is based upon spending two nights at Chateau Lake Louise and one night at Banff Springs Hotel.

Inability to obtain uniform hotel room assignments required some variation in the number of nights scheduled at Chateau Lake Louise and/or Banff Springs Hotel as is indicated in the detailed schedule on page 61.

All activities shown above are included in all "PNW" tours with some adjustments in the order of their occurrence — except Tour 11 omits the visits to Takakkaw Falls and Emerald Lake.

Twelfth Day through Thirteenth Day. Leaving Banff at 4:35 PM the 12th day, the next two days you are homeward bound. Crossing great level wheat fields of Saskatchewan you travel down to Portal, North Dakota. Here your train crosses the international boundary between Canada and the United States. Then on to the Twin Cities — Minneapolis, beautiful city of many lakes . . . St. Paul, capital of Minnesota.

Fourteenth Day. Arrive in Minneapolis at 6:30 AM (CST), where you will transfer to the Chicago, Milwaukee, St. Paul & Pacific's streamliner, "The Morning Hiawatha" for a pleasant daylight trip through picturesque Wisconsin.

Leaving Minneapolis at 7:35 AM (CST) you'll have breakfast and luncheon on the train. You're due in Chicago at 2:45 PM (CST) — the end of the line — and a vacation of outstanding beauty — one you'll always remember with pleasure.

"PNW" TOURS

LEAVE CHICAGO AT 4:45 PM ON SATURDAYS AND THURSDAYS AS FOLLOWS:

| | | |
|--------------------|---------------------|----------------------|
| PNW-1 Sat. June 22 | PNW- 6 Sat. July 27 | PNW-11 Sat. Aug. 31 |
| PNW-2 Sat. June 29 | PNW- 7 Sat. Aug. 3 | PNW-12 Thur. July 4 |
| PNW-3 Sat. July 6 | PNW- 8 Sat. Aug. 10 | PNW-13 Thur. July 18 |
| PNW-4 Sat. July 13 | PNW- 9 Sat. Aug. 17 | PNW-14 Thur. Aug. 1 |
| PNW-5 Sat. July 20 | PNW-10 Sat. Aug. 24 | PNW-15 Thur. Aug. 15 |

DETAILED SCHEDULE

(STANDARD TIME)

| | | | |
|--|----------|-------------------|----------------|
| Lv. Chicago, Ill. (CST) | 4:45 PM | Saturday-Thursday | C.M.St.P.&P. |
| Lv. Omaha, Nebr. (CST) | 1:10 AM | Sunday-Friday | Un. Pac. R. R. |
| Lv. Cheyenne, Wyo. (MST) | 7:45 AM | Sunday-Friday | Un. Pac. R. R. |
| Lv. Pocatello, Idaho (MST) | 5:55 PM | Sunday-Friday | Un. Pac. R. R. |
| Ar. Portland, Oregon (PST) | 7:30 AM | Monday-Saturday | Un. Pac. R. R. |
| Headquarters: Hotel Benson. Sightseeing along Columbia River Highway including stops at Sanctuary of Our Sorrowful Mother, Crown Point, Multnomah Falls, inspection of Bonneville Dam and Fish Hatchery. Return via Cascade Locks, Bridge of the Gods and Evergreen Highway on Washington side of river. | | | |
| Lv. Portland Oregon (PST) | 9:00 AM | Tuesday-Sunday | Un. Pac. R. R. |
| Ar. Tacoma, Wash. (PST) | 12:01 PM | Tuesday-Sunday | Un. Pac. R. R. |

MOTOR TOUR OF MT. RAINIER NATIONAL PARK

Headquarters: Paradise Inn

| | | | |
|---|----------|-------------------|---------------|
| Lv. Tacoma, Wash. (PST) | 1:30 PM | Tuesday-Sunday | Motor |
| Ar. Paradise Inn (PST) | 4:45 PM | Tuesday-Sunday | Motor |
| Lv. Paradise Inn (PST) | 8:30 AM | Thursday-Tuesday | Motor |
| Ar. Bremerton, Wash. (PST) | 12:30 PM | Thursday-Tuesday | Motor |
| Luncheon Elks Club. Sightseeing tour of Puget Sound Naval Shipyard. | | | |
| Lv. Bremerton, Wash. (PST) | 3:20 PM | Thursday-Tuesday | Ferry |
| Ar. Seattle, Wash. (PST) | 4:20 PM | Thursday-Tuesday | Ferry |
| Headquarters: Olympic Hotel. | | | |
| Lv. Seattle, Wash. (PST) | 8:00 AM | Friday-Wednesday | C.P.S.S.Co. |
| Ar. Victoria, B. C. (PST) | 11:50 AM | Friday-Wednesday | C.P.S.S.Co. |
| Headquarters: Empress Hotel. | | | |
| Afternoon De Luxe Victoria City — Butchart's Garden Tour. | | | |
| Lv. Victoria, B. C. (PST) | 1:10 PM | Saturday-Thursday | C.P.S.S.Co. |
| Lv. Vancouver, B. C. (PST) | 6:30 PM | Saturday-Thursday | Can. Pac. Ry. |
| Ar. Field, B. C. (PST) | 12:15 PM | Sunday-Friday | Can. Pac. Ry. |

MOTOR TOUR OF CANADIAN ROCKIES

Headquarters:

TOURS PNW-1-2-4-5-6-7-8-9-15 — two nights Chateau Lake Louise and one night Banff Springs Hotel.

TOURS PNW-3-13-14 — one night Chateau Lake Louise and two nights Banff Springs Hotel.

TOUR PNW-10 — three nights Chateau Lake Louise.

TOUR PNW-11 — three nights Banff Springs Hotel.

TOUR PNW-12 — two nights Chateau Lake Louise and one night Emerald Lake Chalet.

| | | | |
|------------------------------------|---------|------------------|----------------|
| Lv. Banff, Alberta (MST) | 4:35 PM | Wednesday-Monday | Can. Pac. Ry. |
| Ar. Minneapolis, Minn. (CST) | 6:30 AM | Friday-Wednesday | Soo Line R. R. |
| Lv. Minneapolis, Minn. (CST) | 7:35 AM | Friday-Wednesday | C.M.St.P.&P. |
| Ar. Chicago, Ill. (CST) | 2:45 PM | Friday-Wednesday | C.M.St.P.&P. |

COMPLETE COST OF "PNW" TOUR

| From and To Chicago | Including Rail Ticket | Plus Tax | Total Cost Each Person | TOUR FEATURES ONLY (See note below) | |
|-------------------------|--------------------------|-------------|---------------------------|--|-------------|
| | | | | Without Rail Ticket | Plus Tax |
| 2 in Lower Berth | \$405.89 | \$19.77 | \$425.66 | \$279.09 | \$ 7.09 |
| 1 in Lower Berth | 427.79 | 21.96 | 449.75 | 300.99 | 9.28 |
| 1 in Upper Berth | 417.39 | 20.92 | 438.31 | 290.59 | 8.24 |
| 2 in Bedroom | 432.17 | 22.40 | 454.57 | 305.37 | 9.72 |
| 2 in Compartment | 437.57 | 22.94 | 460.51 | 310.77 | 10.26 |
| 3 in Compartment | 419.71 | 21.15 | 440.86 | 292.91 | 8.47 |
| 2 in Drawing Room | 458.04 | 24.99 | 483.03 | 331.24 | 12.31 |
| 3 in Drawing Room | 433.36 | 22.52 | 455.88 | 306.56 | 9.84 |

NOTE: Complete costs shown include rail fare from Chicago. Persons from other points of origin joining tour at Chicago, add cost of rail ticket from home city via route of tour, to the tour feature cost (without rail ticket) shown above.

TICKET ROUTE: C.M.St.P. & P. Chicago to Omaha, Un. Pac. to Seattle, C.P.S.S. Co. to Victoria, C.P.S.S. Co. to Vancouver, C. P. RY. to North Portal, Soo Line R.R. to St. Paul, C.M.St.P. & P. to Chicago.

Rates for children 5 and under 12 years of age on request.

Reduced family fares apply on PNW tours leaving Chicago on Thursdays. Consult your Agent or write regarding savings that might be effected.

ALL MEALS INCLUDED





View along Trail Ridge Road.

ROCKY MOUNTAIN NATIONAL PARK ESTES PARK — GRAND LAKE COLORADO SPRINGS - DENVER

TOUR "RM"

PULLMAN AND COACH
ACCOMMODATIONS

8 DAYS

On the Streamliner "City of Denver"

ALL EXPENSE — IN PULLMAN — LOW AS **\$206.61** Plus Tax

IN RECLINING SEAT COACH **\$169.31** Plus Tax

All Meals Are Included in the Cost.

SATURDAY DEPARTURES FROM CHICAGO.

Here we offer you a week's vacation (8 days) to a region which, while easily accessible, might well be thought of as a "million miles from the commonplace and humdrum." It's a Colorado outing.

There is something about Colorado that's irresistible — the mountains for one thing. Those rugged old giants with their lofty white heads outlined against the blue sky "pep" one up as nothing else can. Then there is the clean, bracing air . . . the invigorating sunshine . . . the fragrant pine forests . . . the silvery lakes and tumbling streams . . . and the outdoor pastimes that go with all this.

Yes, Colorado is an ideal vacation state, and the "RM" Tour is the kind of vacation you'll like — because it will enable you to enjoy so many of its diversions and attractions. Little wonder this tour is so popular.

DAY-BY-DAY STORY

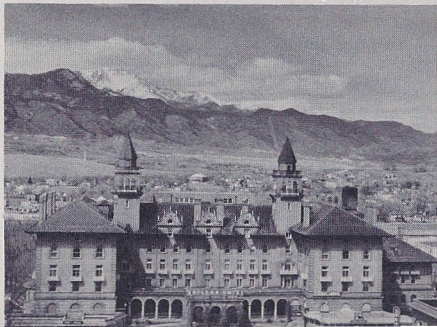
First Day. You board your sleek streamliner, the "City of Denver," in the afternoon and have time to get acquainted with other members of your party before going to dinner. Later you will probably stroll to "The Pub," interesting tavern-lounge, for awhile, enjoy a game of cards or just relax as your train speeds across Illinois and Iowa.

Second Day. Breakfast in the dining car before you arrive in Denver at 8:30 AM. Here you will transfer to the D&RGW RR. for the short ride to Colorado Springs, reached at 10:45 AM.

Limousines will be waiting to take the party to the Antlers Hotel, and the rest of the morning will be spent getting settled in your hotel room, or attending church services. Luncheon at the hotel, then at 1:45 PM leave by automobile for a 40-mile drive, including the beautiful residential districts of Colorado Springs; fantastic and colorful Garden of the Gods and High Mesa. You travel up Cheyenne Mountain to the summit, visiting the Will Rogers Memorial Shrine. Return is by way of North Cheyenne Canon, the High Drive and Bear Creek Canon back to the Antlers Hotel for dinner and lodging. There is an outdoor swimming pool in the hotel's gardens, so bring your bathing suit.

Third Day. The morning is open for resting, shopping or independent action. Breakfast and lunch at hotel. Automobiles leave at 1:45 PM for the 60-mile drive to the summit of venerable Pikes Peak. Dress warmly for you're going up to 14,110 feet above sea level and snow flurries and blustery winds are likely along the way. This thrilling trip will live forever in your memory. Every turn of the road brings new and breath-taking vistas. You will be served a typical western Chuck Wagon dinner at a nearby ranch and enjoy an evening of Cowboy style entertainment under the stars.

Fourth Day. Early breakfast at the hotel, then by motor to the station to "catch" the 8:11 AM train to Denver. Motor buses will be



waiting to take you on a sightseeing trip of Denver's Civic Center, business and residential districts, parks and boulevards, terminating at the Park Lane Hotel for luncheon.

MOTOR CIRCLE TOUR OF ROCKY MOUNTAIN NATIONAL (ESTES) PARK

Soon after luncheon you will motor by way of Longmont, Loveland and the Big Thompson Canyon to Estes Park, reached late in the afternoon.

You are soon roomed in the Chalet-Ranch, a rambling rustic structure of great charm, your headquarters for tonight. After dinner you'll plan your activities for tomorrow morning. Entertainment in the evening. An outdoor swimming pool is available.

Fifth Day. The morning is free. There is ample time for a hike or horseback trip over the beautiful mountain trails nearby. You leave Estes Chalet at 2:15 PM by motor on a spectacular drive over Trail Ridge crossing the Continental Divide and down Milner Pass — exciting views of rugged mountain grandeur.

About 5:15 PM you reach Grand Lake Lodge, your headquarters, with sleeping accommodations provided in rustic cabins. There's entertainment in the evening at the lodge. The nearby village offers movies, dancing and other entertainment.

Sixth Day. All day today for hiking or horseback trips over the well-marked trails of the higher elevations around the lodge — or you may prefer to go boating on Grand Lake — or just relax amid these delightful surroundings.

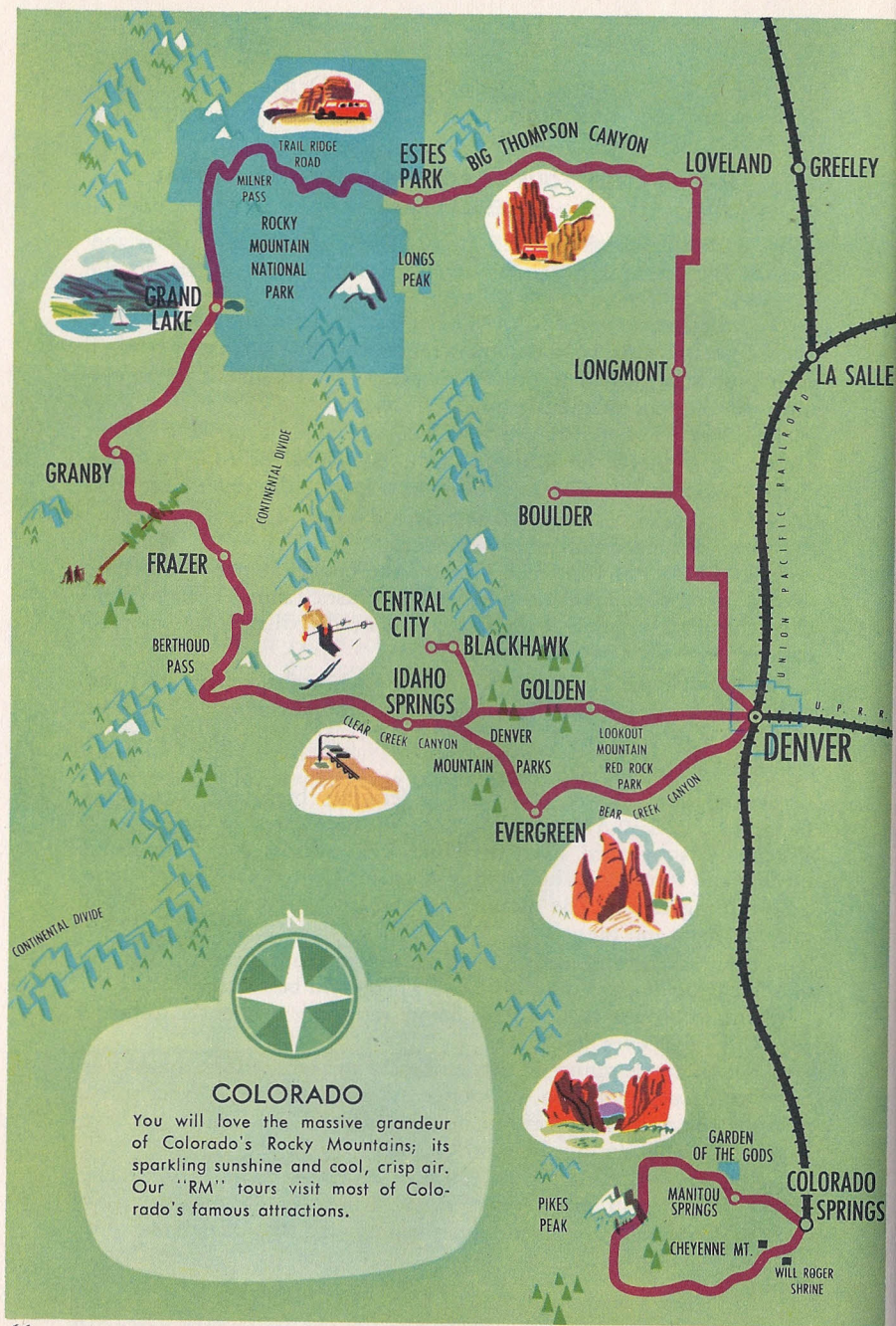
Seventh Day. Today you have a leisurely breakfast, then leave Grand Lake at 8:30 AM, traveling along the headwaters of the Colorado River to Granby, then over Berthoud Pass, recross the Continental Divide, and through Idaho Springs to quaint Central City, once a busy gold-mining center. The mountains here are honeycombed with old mining shafts and tunnels.

There will be a guided tour of the Opera House, and the famous old hotel, the Teller House, where luncheon will be served.

Time to browse around a bit before returning to Denver to board the "City of Denver" for home.

After an ample dinner in the dining car you will wish to spend this last evening of the tour in the lounge car with members of your party, recalling the many happy experiences and grand sights which you have enjoyed together during the past few days.

Eighth Day. Breakfast, then Chicago. As you bid your companions "good-by" you will marvel that so much real enjoyment and truly magnificent scenery are possible in a trip of such short duration.



"RM" TOURS LEAVE CHICAGO AT 4:30 PM ON SATURDAYS AS FOLLOWS:

| | | |
|-------------------|-------------------|--------------------|
| RM-1 Sat. June 8 | RM-5 Sat. July 6 | RM- 9 Sat. Aug. 3 |
| RM-2 Sat. June 15 | RM-6 Sat. July 13 | RM-10 Sat. Aug. 10 |
| RM-3 Sat. June 22 | RM-7 Sat. July 20 | RM-11 Sat. Aug. 17 |
| RM-4 Sat. June 29 | RM-8 Sat. July 27 | RM-12 Sat. Aug. 24 |

DETAILED SCHEDULE

(STANDARD TIME)

| | | | |
|---|----------|----------|----------------|
| Lv. Chicago, Ill. (CST) | 4:30 PM | Saturday | C.M.St.P.&P. |
| Ar. Omaha, Nebr. | 12:45 AM | Sunday | C.M.St.P.&P. |
| Lv. Omaha, Nebr. | 12:55 AM | Sunday | Un. Pac. R. R. |
| Ar. Denver, Colo. (MST) | 8:30 AM | Sunday | Un. Pac. R. R. |
| Lv. Denver, Colo. | 9:00 AM | Sunday | D.&R.G.W.R.R. |
| Ar. Colorado Springs, Colo. | 10:45 AM | Sunday | D.&R.G.W.R.R. |
| Headquarters: Antlers Hotel. | | | |
| Sightseeing Program — Sunday and Monday. Chuck Wagon Dinner Monday. | | | |
| Lv. Colorado Springs, Colo. | 8:11 AM | Tuesday | D.&R.G.W.R.R. |
| Ar. Denver, Colo. | 9:50 AM | Tuesday | D.&R.G.W.R.R. |
| Luncheon: Park Lane Hotel. Sightseeing Program. | | | |

MOTOR TOUR OF ROCKY MOUNTAIN NATIONAL PARK

| | | | |
|---|----------|-----------|----------------|
| Lv. Denver, Colo. | 1:30 PM | Tuesday | Motor |
| Via Big Thompson Canyon. | | | |
| Ar. Estes Park, Colo. | 4:30 PM | Tuesday | Motor |
| Headquarters: Estes Park Chalet Ranch. Nature walks, hiking, swimming in outdoor pool, etc. | | | |
| Lv. Estes Park, Colo. | 2:15 PM | Wednesday | Motor |
| Via Trail Ridge Route. | | | |
| Ar. Grand Lake, Colo. | 5:15 PM | Wednesday | Motor |
| Headquarters: Grand Lake Lodge. Thursday open for hiking, etc. | | | |
| Lv. Grand Lake, Colo. | 8:30 AM | Friday | Motor |
| Via Berthoud Pass and Idaho Springs. | | | |
| Ar. Central City, Colo. | 11:50 AM | Friday | Motor |
| Luncheon at Teller House. Conducted tour of Teller House and Opera House. | | | |
| Lv. Central City, Colo. | 1:30 PM | Friday | Motor |
| Ar. Denver, Colo. | 2:30 PM | Friday | Motor |
| Lv. Denver, Colo. (MST) | 3:30 PM | Friday | Un. Pac. R. R. |
| Ar. Omaha, Nebr. (CST) | 12:30 AM | Saturday | Un. Pac. R. R. |
| Lv. Omaha, Nebr. | 12:40 AM | Saturday | C.M.St.P.&P. |
| Ar. Chicago, Ill. (CST) | 8:45 AM | Saturday | C.M.St.P.&P. |

COMPLETE COST OF "RM" TOUR

From and To Chicago

| | Including Rail Ticket | Plus Tax | Total Cost Each Person | Without Rail Ticket | Plus Tax |
|--------------------|--------------------------|-------------|---------------------------|------------------------|-------------|
| Using Coach Seat | \$169.31 | \$ 8.90 | \$178.21 | \$117.91 | \$ 3.76 |
| 2 in Lower | 206.61 | 12.19 | 218.80 | 134.66 | 4.99 |
| 1 in Lower | 218.86 | 13.41 | 232.27 | 146.91 | 6.21 |
| 1 in Upper | 212.86 | 12.81 | 225.67 | 140.91 | 5.61 |
| 1 in Roomette | 228.56 | 14.38 | 242.94 | 156.61 | 7.18 |
| 2 in Bedroom | 221.26 | 13.65 | 234.91 | 149.31 | 6.45 |
| 2 in Bedroom Suite | 240.91 | 15.62 | 256.53 | 168.96 | 8.42 |
| 3 in Bedroom Suite | 225.40 | 14.06 | 239.46 | 153.45 | 6.86 |

TOUR FEATURES ONLY (See note below)

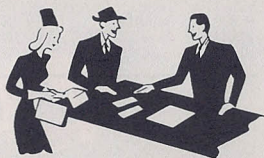
NOTE: Complete costs shown include rail fare from Chicago. Persons from other points of origin joining tour at Chicago, add cost of rail ticket from home city via route of tour, to the tour feature cost (without rail ticket) shown above.

TICKET ROUTE: C.M.St.P. & P. Chicago to Omaha, Un. Pac. to Denver, D. & R.G.W. to Colorado Springs, D. & R.G.W. to Denver, Un. Pac. to Omaha, C.M.St.P. & P. to Chicago.

Rates for children 5 and under 12 years of age on request.

ALL MEALS INCLUDED

GENERAL INFORMATION



Hotel and Lodge Accommodations. Tour rates are based on double occupancy of rooms (twin beds). Rooms with bath are provided at all hotels and lodges used **except in Yellowstone and Rocky Mountain National Parks** where rooms with bath are limited but will be reserved on request, **if available**, at the additional charges shown below. National Park facilities come under the jurisdiction of the Department of the Interior.

| | |
|--------------------------------------|--|
| National Parks Accommodations | Added charge for rooms with bath, |
| included in tour cost | double occupancy |

| | |
|--|---|
| Yellowstone — room without bath | \$1.50 and \$2.00 per person per day |
| Estes Park Chalet — room without bath . . | \$1.00 per person per day |
| Grand Lake — Rustic Cabin without bath . | \$1.00 per person per day |
| Jackson Lake Lodge — Guest-lodge with bath. | |
| Yosemite — "C" Tour — with bath at Ahwahnee Hotel. | |
| Yosemite — "BC" Tour — with bath at Camp Curry. | |
| Mt. Rainier — with bath at Paradise Inn. | |
| Utah—Arizona Parks—cabin with shower. | De luxe cabins with bath available at added cost of \$1.25 per person per day. |

Meal Arrangements. *All meals are included in the cost of tours.* Coupons with stated values are provided for meals taken in dining cars and at certain hotels. Refund of the difference is made when meal check totals less than coupon value. Escorts arrange settlement for all meals for which individual coupons are not provided. Coupon values for dining car meals vary depending upon meal prices prevailing on the trains being used. For example, on a number of tours coupons are valued at \$1.75 for breakfast, \$2.00 for luncheon and \$3.25 for dinner. Values are increased while tours are moving on certain other trains and in some instances are decreased.

In any case the coupon values permit a choice of entrees on all trains. Hotel meal coupon values also vary depending upon prices prevailing at the hotels used.

EQUIPMENT. All *regularly assigned* sleeping cars will be lightweight, streamlined cars.

When additional cars are required they are carefully selected from the Pullman Company's reserve of extra cars and, although they may not all be of the lightweight type, all are in excellent condition, completely air-conditioned and provide a choice of accommodations, assuring you of every comfort.

Leg-rest coaches are provided on the "BC" tours using the "City of Los Angeles" westbound and the streamliner "City of San Francisco" eastbound, also on tour "ZLV" Chicago to Las Vegas on the "City of Los Angeles" and Denver to Chicago on the "City of Denver".

Coaches with leg-rests are also provided from Denver to Chicago on tours "YT", "YRG", "YTZ" and "Z" and Chicago to Denver and return on tour "RM", while these tours are traveling on the "City of Denver".

Coaches regularly assigned while tours are moving on other trains are late-type air-conditioned cars with comfortable individual reclining seats but without leg-rests.

Children under 12 years of age are entitled to half-fare transportation and various other reductions in tour costs. Rates on request.

Baggage. One or two suit cases or bags will hold sufficient clothing for your entire trip. The Department of Tours will pay for all service in connection with the handling of baggage at stop-over points.

One piece of baggage, weighing not more than twenty-five pounds, will be carried free in the National Parks. If it is desired you may also carry a small overnight bag with you. Additional baggage may be checked free at park gateways. The Department of Tours assumes no responsibility for baggage or personal effects, but in the event of damage, delay or loss, will do all in its reasonable power to lessen the hardships incurred. Your escort will furnish special baggage tags to attach to each piece of luggage which you desire him to handle.

Wearing Apparel. Warm summer days suggest lightweight clothing, however nights in mountain regions are cool and topcoats, sweaters, and weather-proof outer garments are desirable. Sport or casual clothes are most practical for travel en route and in the parks. A business suit for men, a couple of informal dresses for women, suitable for dinner or evening wear, are suggested. Bring your camera, a pair of colored glasses and, of course, shoes suitable for hiking.

Church Services. Your escort will be fully informed regarding church services at places visited on Sunday.

Mail and Telegrams should be addressed to the various hotels shown in the itinerary of the tour you are taking. Specify "Member of Union Pacific Tour YT-5" or whatever the particular designating letter and number may be. The post office address of all hotels in Yellowstone Park is "Yellowstone National Park, Wyoming." In the Utah-Arizona Parks addresses are as follows: Bryce Canyon National Park Lodge, Bryce Canyon Post Office, Utah; Zion National Park Lodge, Zion National Park Post Office, Utah; Grand Canyon Lodge, North Rim Post Office, Arizona; El Escalante Hotel, Cedar City, Utah; Estes Park Chalet-Ranch, Estes Park, Colo., Grand Lake Lodge, Grand Lake, Colo. The address of the Ahwahnee Hotel and Camp Curry is Yosemite National Park, California. The address of "PNW" Tour passengers in Mt. Rainier National Park is Paradise Inn, Washington.

How to Join Our Tours. Simply fill in the reservation blank on page 71, then mail or take it to the travel agent or office shown on back cover or page 72 — or, mail it to Union Pacific Department of Tours, 517 W. Adams St., Chicago 6, Illinois. Although advance deposits are not required, remittance should be made not later than ten days before departure of tour, but when this is inconvenient,

we will, upon request, hold reservations longer. Persons prevented from going may procure refund in full, provided Pullman reservations are cancelled before noon the Friday prior to scheduled date of departure from Chicago.

Purchase Railroad Tickets at Your Home Station. Passengers coming from points other than Chicago may join our tour parties at Chicago or at any regular stopping point en route between Chicago and Omaha. To obtain full benefit of the round trip fares, railroad tickets should be purchased from home station, reading via the route of the tour, as shown in the itinerary.

Personal Service. Any representative of the Department of Tours, the Union Pacific Railroad, or your travel agent, will be glad to give you further information or arrange your tour reservation. In the event the tours outlined do not fit your vacation plans these representatives will gladly plan an independent Western itinerary and make your reservations. If you wish, a representative will call at your home or office to help you with your travel plans. There is no charge — this is just part of our friendly service.

Passengers joining Tours at Chicago Must Check in at Tour Desk, train level floor, of the Chicago Union Station, at time and place indicated on back of your membership coupon book. Here you will meet your escort. If joining elsewhere go directly to the space assigned for your use. Escort will see you there if he should miss seeing you as you board the train.

Immigration Regulations. Naturalized citizens of the United States must have in their possession naturalization papers. Alien passengers must hold valid passport, a visa for entry into Canada or Mexico and a visa or re-entry permit for re-entry into the United States. American-born citizens should carry with them some form of identification such as Birth Certificate, Voters' Registration or other form which shows citizenship. Such forms should be carried personally by passengers when entering and leaving Canada or Mexico.

Responsibility. In the sale of these tours the Department of Tours acts only as agent for the various hotels, transportation companies, railroads, Pullman Company, etc., and assumes no responsibility for loss or damage to baggage or injury to persons. Rates, train schedules and arrangements quoted herein are subject to such change as tariff or operating requirements may later demand.

The right is reserved to decline to accept or retain any person as a member of these tours at any time.

**ALL RATES AND SCHEDULES SHOWN HEREIN ARE THOSE IN EFFECT
FEBRUARY 1, 1957 AND ARE SUBJECT TO CHANGE.**

TRAIN TRAVEL IS ALWAYS COMFORTABLE AND RELAXING

The minute you step aboard you can forget summer's heat in pleasant air-conditioned surroundings. You can dine leisurely in an attractive Dining Car where a choice of skillfully prepared fresh foods tempt your appetite.

Many pleasant moments may be spent with your congenial tour companions in the Lounge or Club Cars provided on most trains for Pullman sleeping car passengers.

APPLICATION FOR RESERVATION

Reservations are desired on Union Pacific Tour _____ leaving Chicago _____
(Insert tour designation) (Date)

- | | | | |
|--------------------------------------|-----------------------------------|---------------------------------------|--|
| <input type="checkbox"/> Lower Berth | <input type="checkbox"/> Roomette | <input type="checkbox"/> Compartment | <input type="checkbox"/> Bedroom Suite |
| <input type="checkbox"/> Upper Berth | <input type="checkbox"/> Bedroom | <input type="checkbox"/> Drawing Room | <input type="checkbox"/> Coach Seat |

(Types of train accommodations available are indicated by rate quotations following description of each tour. See page 68 for information about hotel and lodge accommodations. When two or more in party show names of all members. If more than two persons, state how members wish to be assigned in Pullman, hotel or lodge accommodations.)

Name _____ Telephone _____

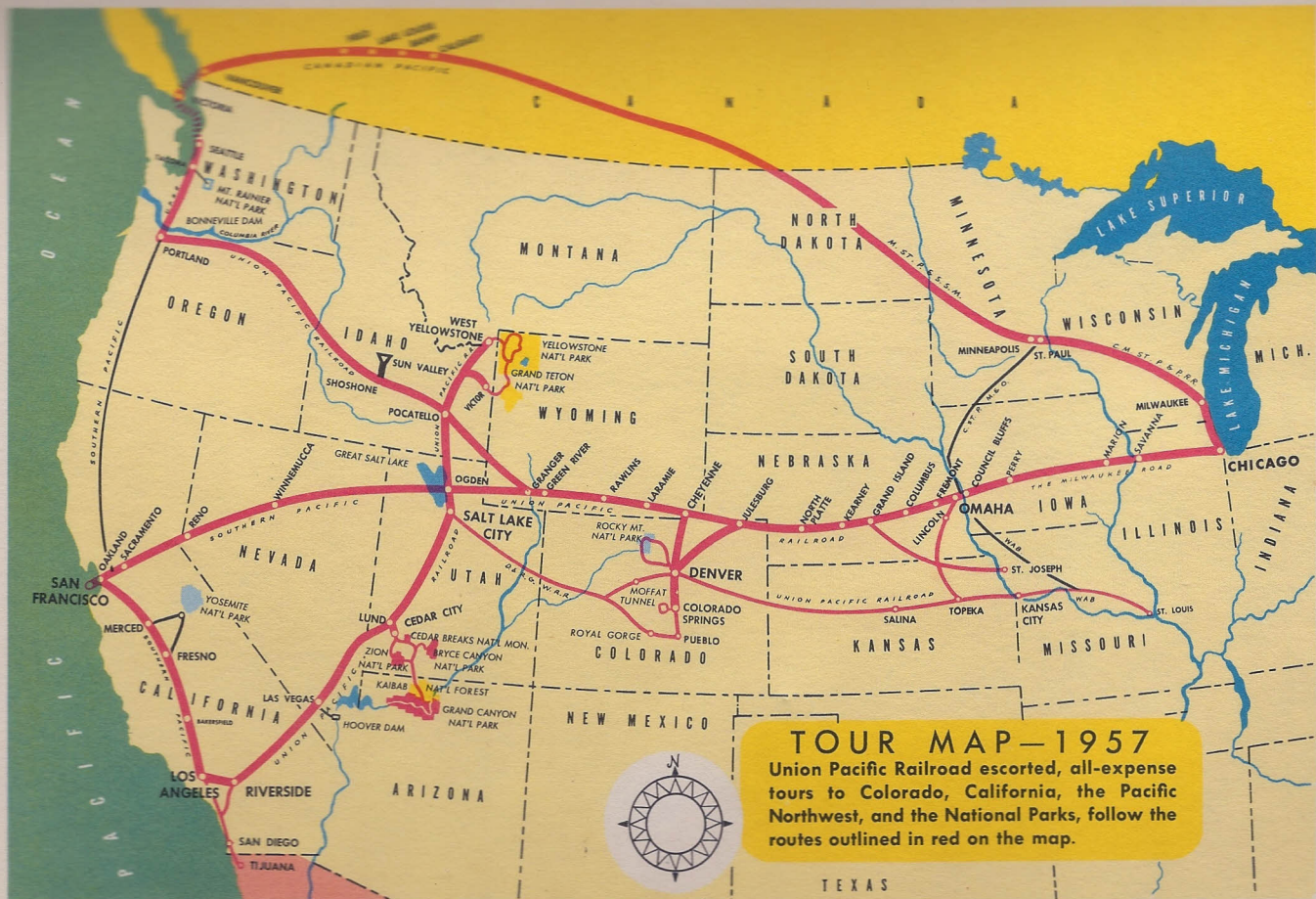
Address _____ City _____ Zone _____ State _____

I will be accompanied by:

| NAME | STREET ADDRESS | CITY | STATE |
|-------|----------------|-------|-------|
| _____ | _____ | _____ | _____ |
| _____ | _____ | _____ | _____ |
| _____ | _____ | _____ | _____ |
| _____ | _____ | _____ | _____ |
| _____ | _____ | _____ | _____ |

Names and ages of any minors listed above _____

Remarks _____



Western summer tours



1957

For Reservations or Additional Information Apply To

T. W. GURSKY, General Traffic Agent
UNION PACIFIC RAILROAD
1223 AMBASSADOR BLDG.,
ST. LOUIS 1, MO.

