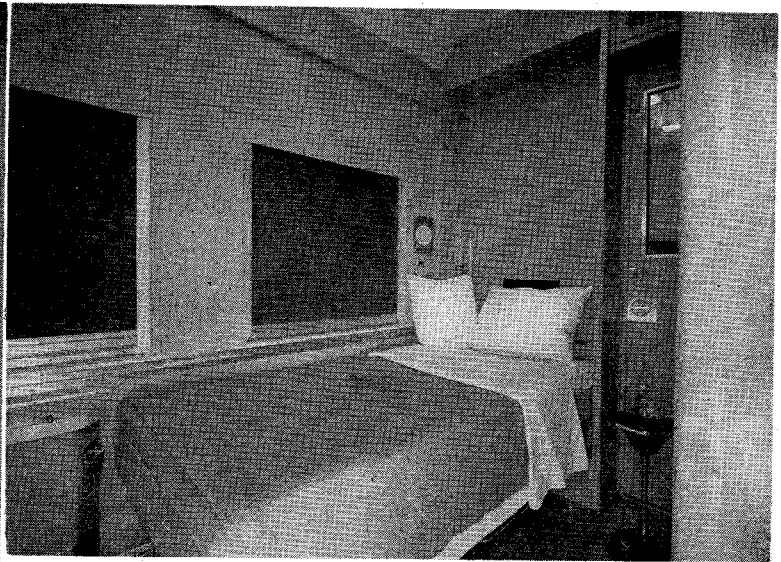
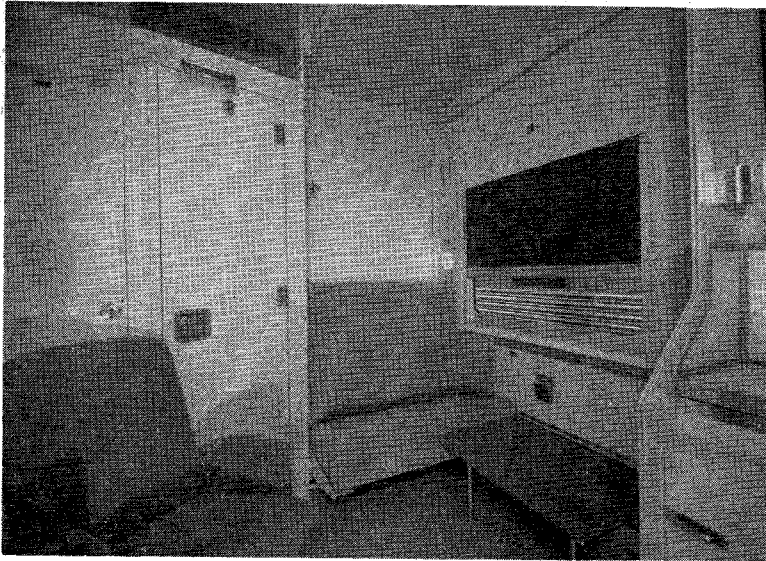


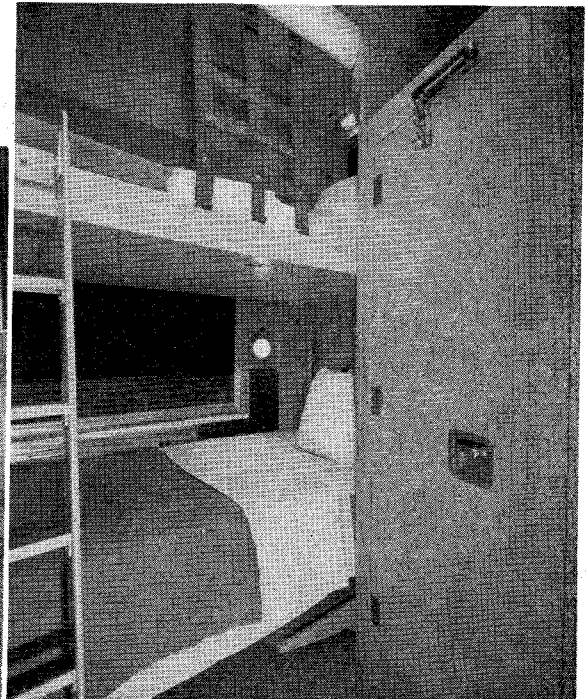
Interior of bedroom with convertible sofa and toilet facilities.



Interior of drawing room showing folding bed arranged for night use.

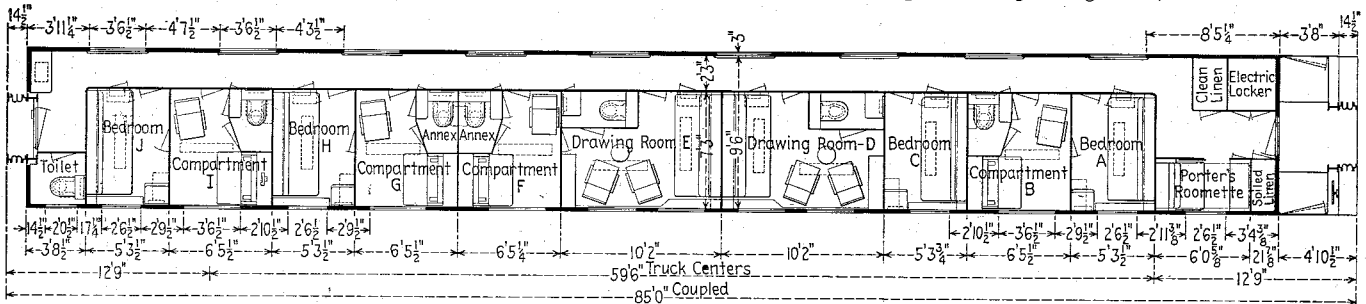


Interior of a compartment with partition between adjacent bedroom removed, daytime use.



Interior of compartment with upper and lower berths arranged for sleeping purposes.

Below—Floor plan of sleeping car with 4 bedrooms, 4 compartments and 2 drawing rooms. Light weight 151,000 lb.



Builder, American Car and Foundry, Division of ACF Industries, Inc.