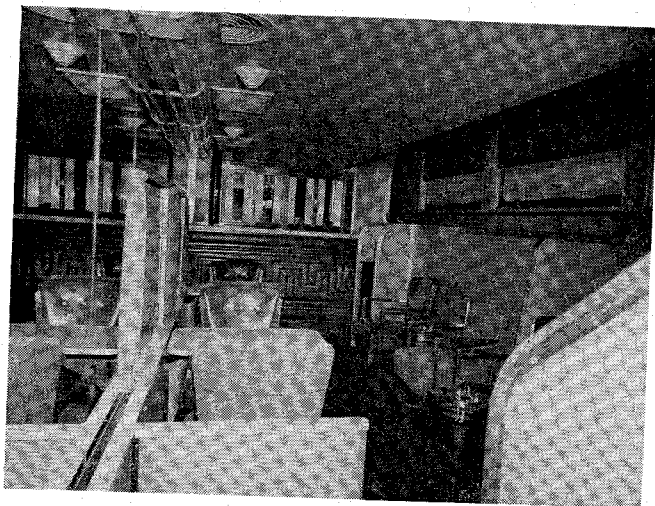
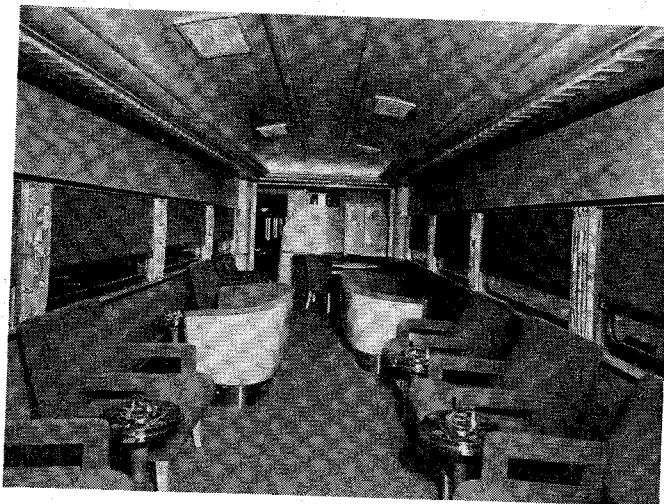


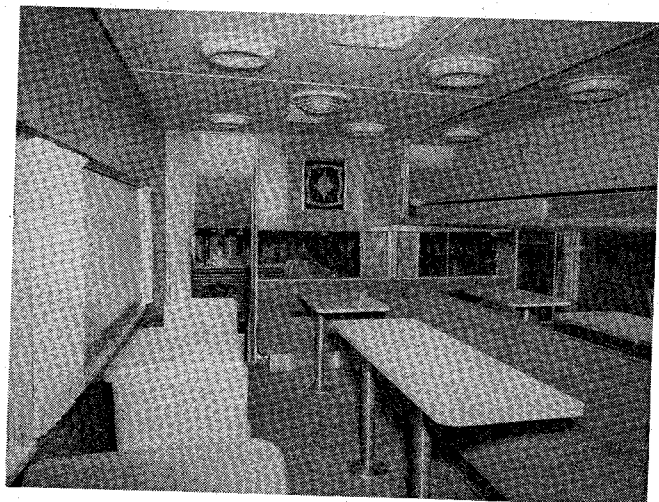
Atchison, Topeka & Santa Fe dome-lounge-observation car for use on "Super-Chief" trains. Floor plan shown on following page.



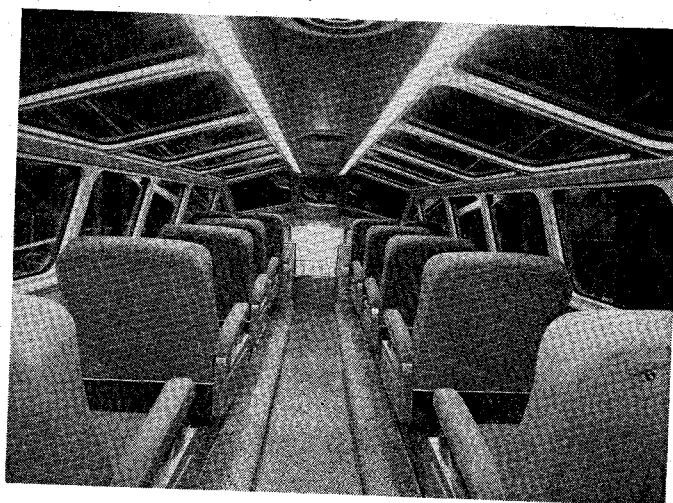
Interior view of lower cocktail lounge.



Interior view of main lounge.

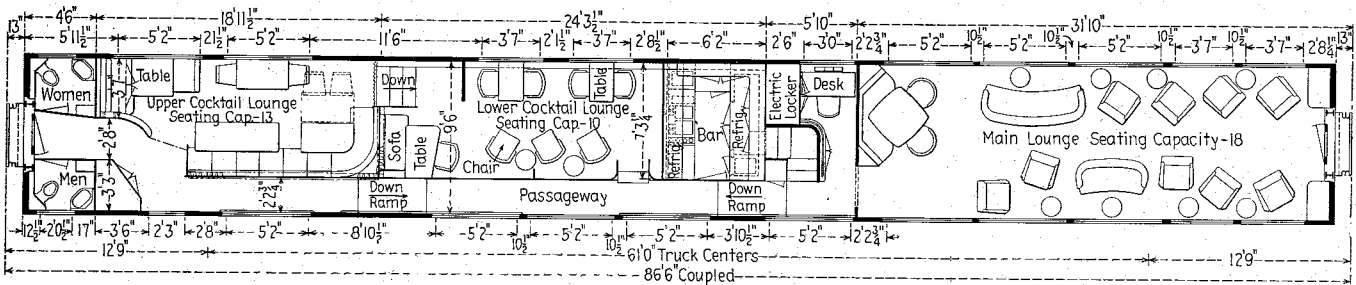
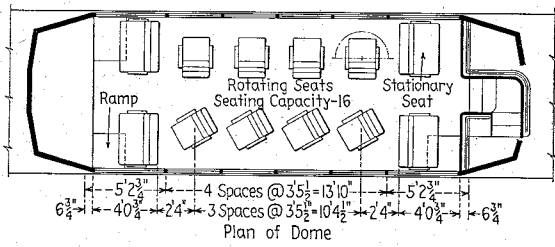


Interior view of upper cocktail lounge.



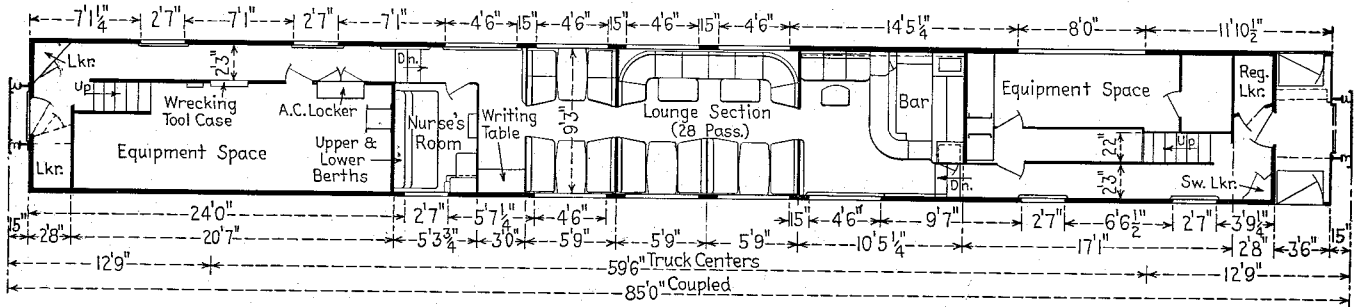
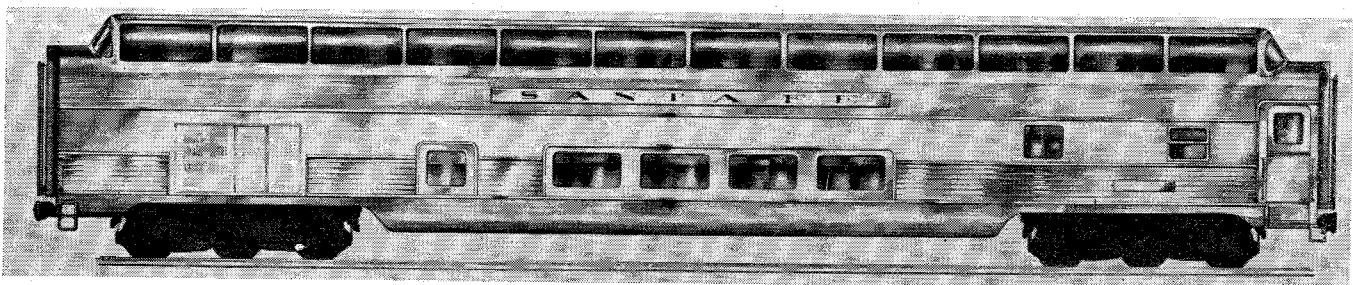
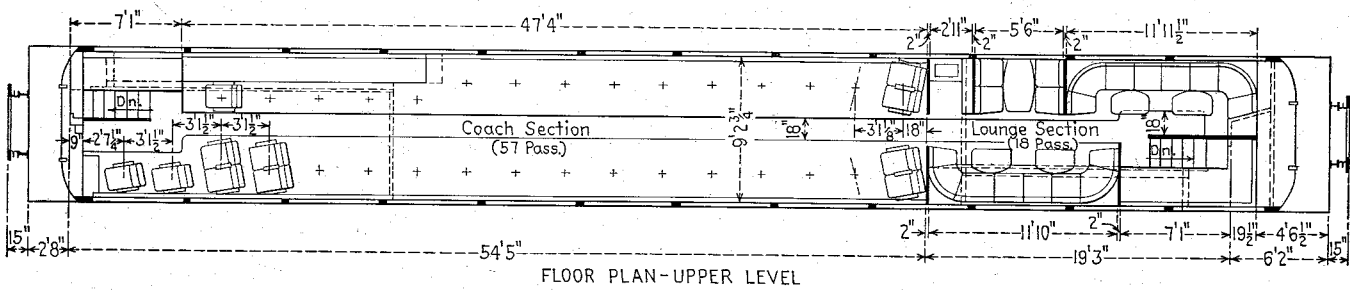
Interior view of observation dome.

Builder, Pullman-Standard Car Manufacturing Co.



Atchison, Topeka & Santa Fe dome-lounge car built by Pullman-Standard Car Manufacturing Co. Light weight, 155,500 lb.

(See preceding page)



Floor plans and side view of Atchison, Topeka & Santa Fe full length dome-observation coach. Builder, The Budd Company.