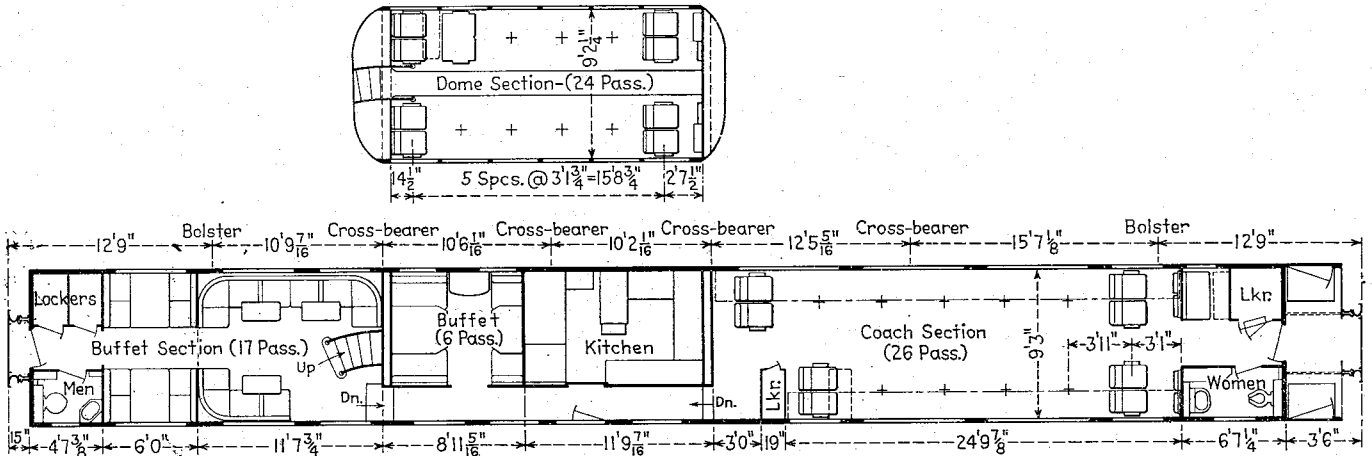


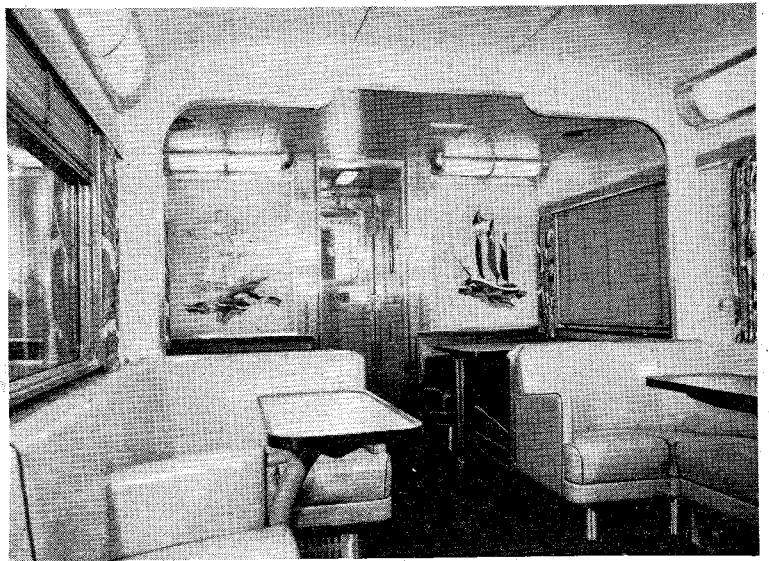
Canadian Pacific scenic dome stainless steel coach for assignment to "The Canadian". Weight 147,680 lb.



Floor plan of Canadian Pacific scenic dome stainless steel coach.

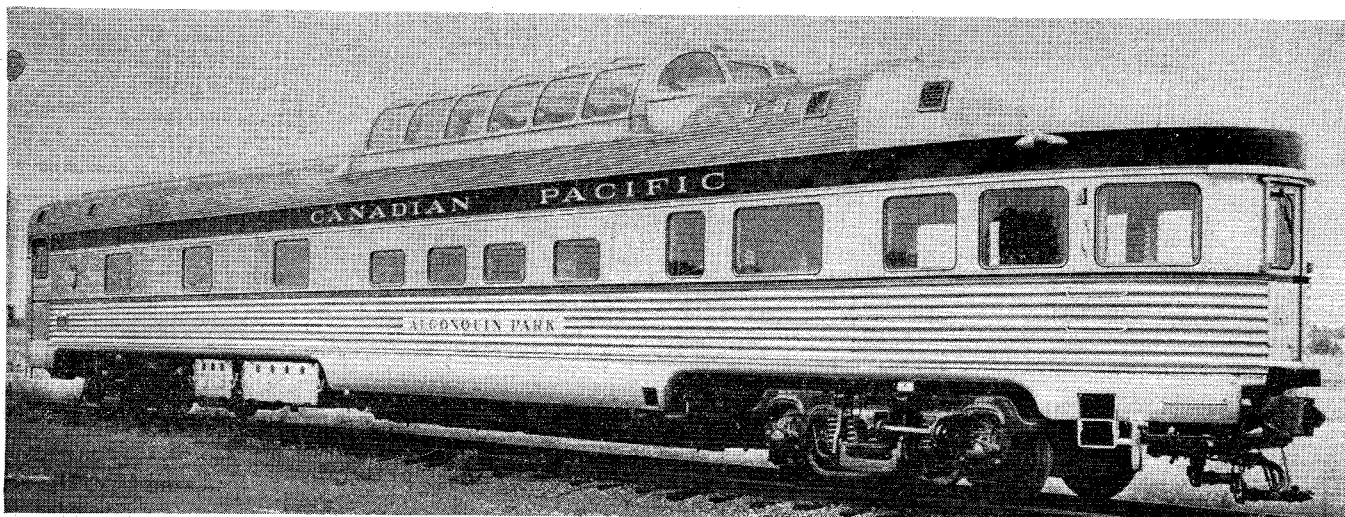


Upper level of Canadian Pacific scenic dome stainless steel coach.

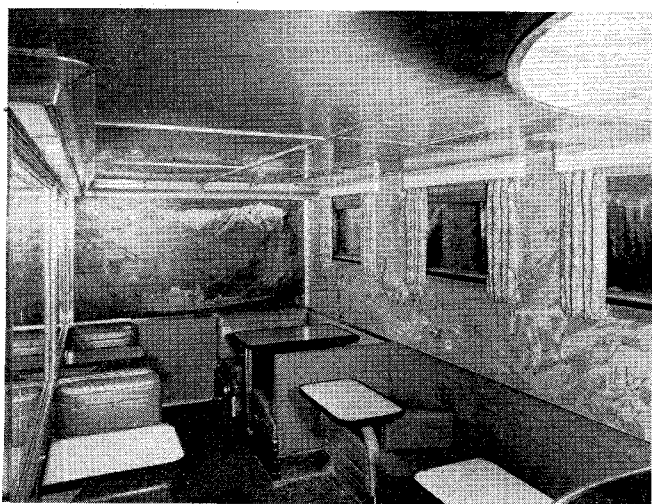


Coffee shop of Canadian Pacific scenic dome stainless steel coach.

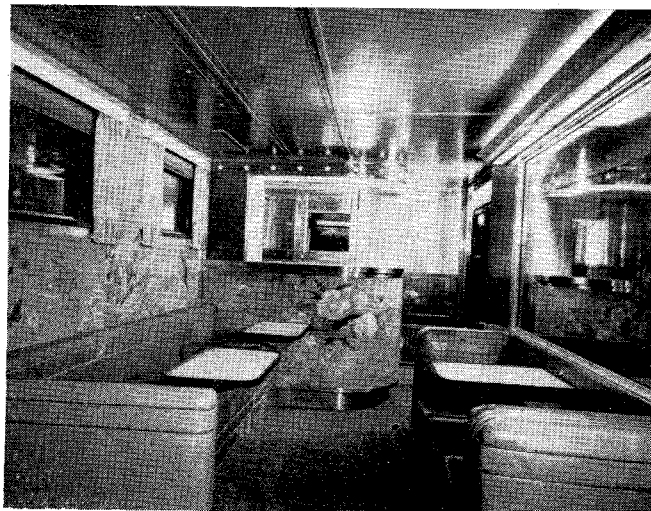
Builder, The Budd Company



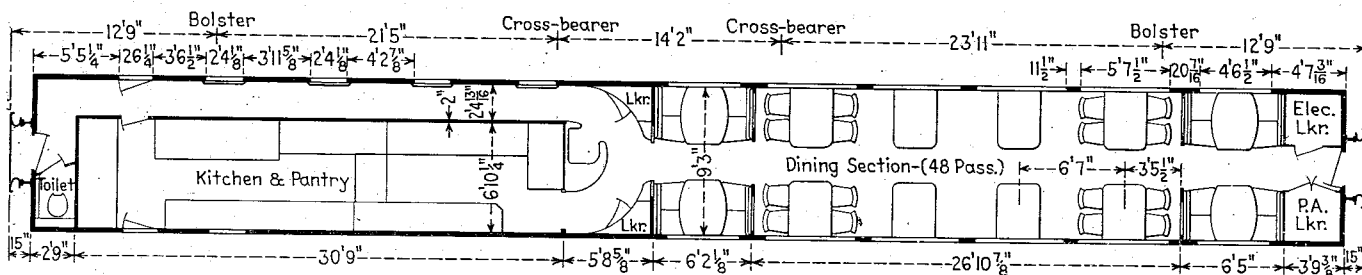
Canadian Pacific scenic dome lounge-sleeping car for assignment to "The Canadian".



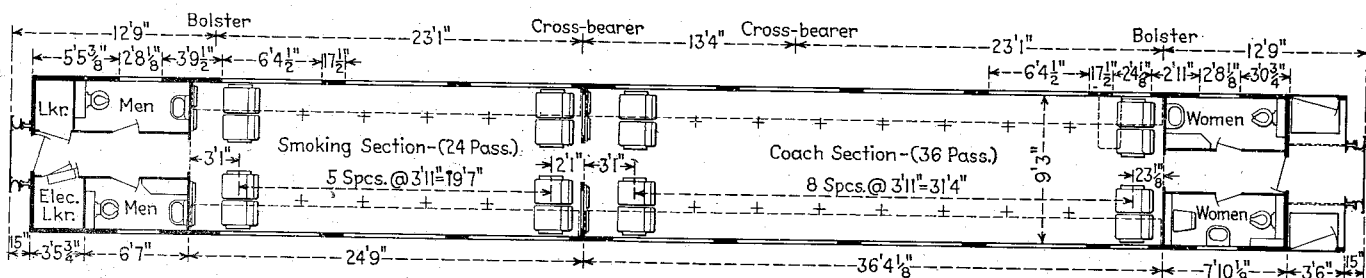
Mural lounge of Canadian Pacific scenic dome lounge-sleeping car. Rear of bar section.



Mural lounge of Canadian Pacific scenic dome lounge-sleeping car. Bar section.



Floor plan of Canadian Pacific dining car for assignment to "The Canadian". Weight 141,630 lb.



Floor plan of Canadian Pacific 60-passenger coach for assignment to "The Canadian". Weight 121,500 lb.

Builder, The Budd Company